

GKN1 rabbit pAb

Catalog No :	YT6872
Reactivity :	Human;Mouse
Applications :	WB
Target :	GKN1
Gene Name :	GKN1 AMP18 CA11 UNQ489/PRO1005
Protein Name :	GKN1
Human Gene Id :	56287
Human Swiss Prot No :	Q9NS71
Mouse Gene Id :	66283
Mouse Swiss Prot No :	Q9CR36
Immunogen :	Synthesized peptide derived from human GKN1 AA range: 47-97
Specificity :	This antibody detects endogenous levels of GKN1 at Human/Mouse
Formulation :	Liquid in PBS containing 50% glycerol, 0.5% BSA and 0.02% sodium azide.
Source :	Polyclonal, Rabbit,IgG
Dilution :	WB 1[?]500-2000
Purification :	The antibody was affinity-purified from rabbit antiserum by affinity-chromatography using epitope-specific immunogen.
Concentration :	1 mg/ml
Storage Stability :	-15°C to -25°C/1 year(Do not lower than -25°C)

Molecularweight : 22kD

Background : The protein encoded by this gene is found to be down-regulated in human gastric cancer tissue as compared to normal gastric mucosa. [provided by RefSeq, Jul 2008],

Function : caution:It is uncertain whether Met-1 or Met-15 is the initiator.,function:Has mitogenic activity and may be involved in maintaining the integrity of the gastric mucosal epithelium.,similarity:Belongs to the gastrokine family.,similarity:Contains 1 BRICHOS domain.,tissue specificity:Expressed in stomach. No expression is detected in cancer tissue or gastric cancer cell lines.,

Subcellular Location : Secreted . Cytoplasmic granule . Golgi apparatus . Shows abundant granular cytoplasmic staining, with perinuclear accentuation suggestive of the Golgi apparatus. .

Expression : Expressed in stomach (at protein level). No expression is detected in cancer tissue or gastric cancer cell lines.

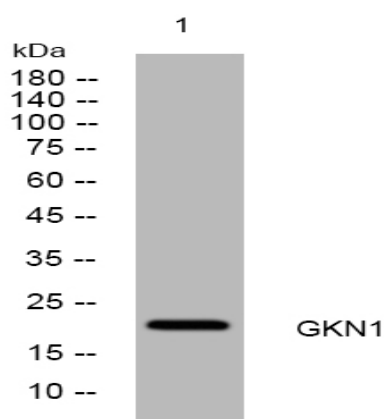
Sort : 6596

No4 : 1

Host : Rabbit

Modifications : Unmodified

Products Images



Western blot analysis of lysates from HpeG2 cells, primary antibody was diluted at 1:1000, 4° over night