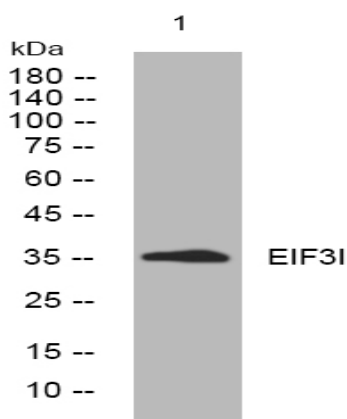


EIF3I rabbit pAb

Catalog No :	YT6871
Reactivity :	Human;Mouse;Rat
Applications :	WB
Target :	EIF3I
Gene Name :	EIF3I EIF3S2 TRIP1
Protein Name :	EIF3I
Human Gene Id :	8668
Human Swiss Prot No :	Q13347
Mouse Gene Id :	54709
Mouse Swiss Prot No :	Q9QZD9
Rat Gene Id :	682390
Rat Swiss Prot No :	B0BNA7
Immunogen :	Synthesized peptide derived from human EIF3I AA range: 100-150
Specificity :	This antibody detects endogenous levels of EIF3I at Human/Mouse/Rat
Formulation :	Liquid in PBS containing 50% glycerol, 0.5% BSA and 0.02% sodium azide.
Source :	Polyclonal, Rabbit,IgG
Dilution :	WB 1:500-2000
Purification :	The antibody was affinity-purified from rabbit antiserum by affinity-chromatography using epitope-specific immunogen.

Concentration :	1 mg/ml
Storage Stability :	-15°C to -25°C/1 year(Do not lower than -25°C)
Molecularweight :	36kD
Function :	function:Component of the eukaryotic translation initiation factor 3 (eIF-3) complex, which is required for several steps in the initiation of protein synthesis. The eIF-3 complex associates with the 40S ribosome and facilitates the recruitment of eIF-1, eIF-1A, eIF-2:GTP:methionyl-tRNA _i and eIF-5 to form the 43S preinitiation complex (43S PIC). The eIF-3 complex stimulates mRNA recruitment to the 43S PIC and scanning of the mRNA for AUG recognition. The eIF-3 complex is also required for disassembly and recycling of posttermination ribosomal complexes and subsequently prevents premature joining of the 40S and 60S ribosomal subunits prior to initiation.,mass spectrometry: PubMed:17322308,mass spectrometry: PubMed:18599441,PTM:Phosphorylated by TGF-beta type II receptor.,similarity:Belongs to the eIF-3 subunit I family.,similarity:Contains 5 WD repeats.,subunit:Component of the eukaryotic
Subcellular Location :	Cytoplasm .
Sort :	5469
No4 :	1
Host :	Rabbit
Modifications :	Unmodified

Products Images



Western blot analysis of lysates from HpeG2 cells, primary antibody was diluted at 1:1000, 4° over night