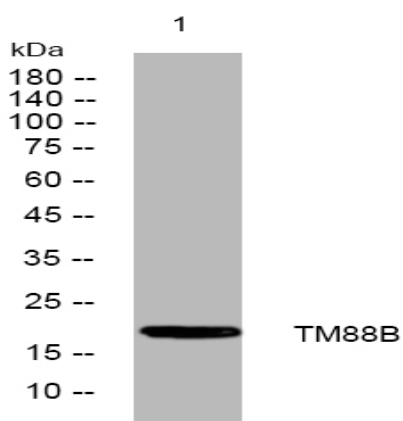


TM88B rabbit pAb

Catalog No :	YT6869
Reactivity :	Human;Mouse
Applications :	WB
Target :	TM88B
Gene Name :	TMEM88B
Protein Name :	TM88B
Human Gene Id :	643965
Human Swiss Prot No :	A6NKF7
Mouse Gene Id :	320587
Mouse Swiss Prot No :	Q3TYP4
Immunogen :	Synthesized peptide derived from human TM88B AA range: 2-52
Specificity :	This antibody detects endogenous levels of TM88B at Human/Mouse
Formulation :	Liquid in PBS containing 50% glycerol, 0.5% BSA and 0.02% sodium azide.
Source :	Polyclonal, Rabbit,IgG
Dilution :	WB 1:500-2000
Purification :	The antibody was affinity-purified from rabbit antiserum by affinity-chromatography using epitope-specific immunogen.
Concentration :	1 mg/ml
Storage Stability :	-15°C to -25°C/1 year(Do not lower than -25°C)

Molecularweight :	18kD
Function :	similarity:Belongs to the TMEM88 family.,
Subcellular Location :	Membrane ; Multi-pass membrane protein .
Sort :	17224
No4 :	1
Host :	Rabbit
Modifications :	Unmodified

Products Images



Western blot analysis of lysates from U2OS cells, primary antibody was diluted at 1:1000, 4° over night