

KR132 rabbit pAb

Catalog No :	YT6868
Reactivity :	Human
Applications :	WB;IHC
Target :	KR132
Gene Name :	KRTAP13-2 KAP13.2
Protein Name :	KR132
Human Gene Id :	337959
Human Swiss Prot No :	Q52LG2
Immunogen :	Synthesized peptide derived from human KR132 AA range: 42-92
Specificity :	This antibody detects endogenous levels of KR132 at Human
Formulation :	Liquid in PBS containing 50% glycerol, 0.5% BSA and 0.02% sodium azide.
Source :	Polyclonal, Rabbit,IgG
Dilution :	WB 1:500-2000;IHC 1:50-300
Purification :	The antibody was affinity-purified from rabbit antiserum by affinity-chromatography using epitope-specific immunogen.
Concentration :	1 mg/ml
Storage Stability :	-15 °C to -25 °C/1 year(Do not lower than -25 °C)
Molecularweight :	19kD
Function :	function:In the hair cortex, hair keratin intermediate filaments are embedded in an interfilamentous matrix, consisting of hair keratin-associated proteins (KRTAP), which are essential for the formation of a rigid and resistant hair shaft

through their extensive disulfide bond cross-linking with abundant cysteine residues of hair keratins. The matrix proteins include the high-sulfur and high-glycine-tyrosine keratins.,similarity:Belongs to the PMG family.,subunit:Interacts with hair keratins.,

Subcellular Location :

intermediate filament,

Sort :

8989

No4 :

1

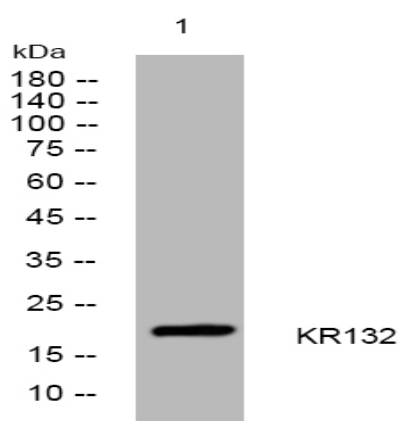
Host :

Rabbit

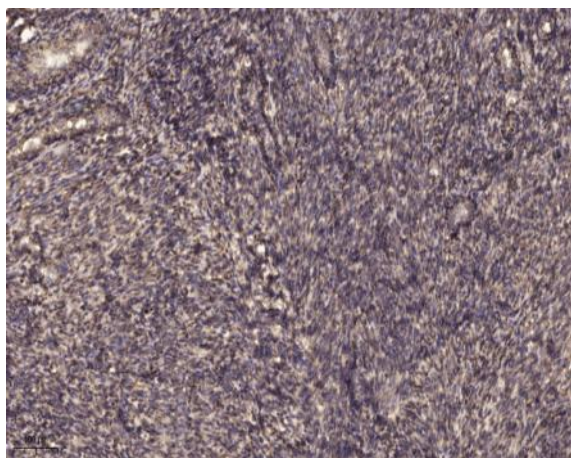
Modifications :

Unmodified

Products Images



Western blot analysis of lysates from HpeG2 cells, primary antibody was diluted at 1:1000, 4° over night



Immunohistochemical analysis of paraffin-embedded human uterus. 1, Antibody was diluted at 1:200(4° overnight). 2, Tris-EDTA,pH9.0 was used for antigen retrieval. 3,Secondary antibody was diluted at 1:200(room temperature, 45min).