

## SRGP2 rabbit pAb

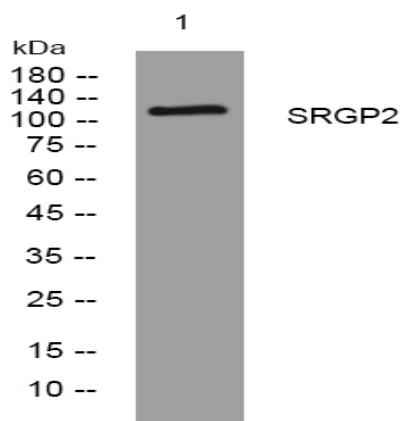
<b>Catalog No :</b>	YT6865
<b>Reactivity :</b>	Human;Mouse;Rat
<b>Applications :</b>	WB
<b>Target :</b>	SRGP2
<b>Fields :</b>	>>Axon guidance
<b>Gene Name :</b>	SRGAP2 ARHGAP34 FNBP2 KIAA0456 SRGAP2A
<b>Protein Name :</b>	SRGP2
<b>Human Gene Id :</b>	23380
<b>Human Swiss Prot No :</b>	O75044
<b>Mouse Gene Id :</b>	14270
<b>Mouse Swiss Prot No :</b>	Q91Z67
<b>Rat Swiss Prot No :</b>	D4A208
<b>Immunogen :</b>	Synthesized peptide derived from human SRGP2 AA range: 476-526
<b>Specificity :</b>	This antibody detects endogenous levels of SRGP2 at Human/Mouse/Rat
<b>Formulation :</b>	Liquid in PBS containing 50% glycerol, 0.5% BSA and 0.02% sodium azide.
<b>Source :</b>	Polyclonal, Rabbit,IgG
<b>Dilution :</b>	WB 1:500-2000
<b>Purification :</b>	The antibody was affinity-purified from rabbit antiserum by affinity-chromatography using epitope-specific immunogen.

---

<b>Concentration :</b>	1 mg/ml
<b>Storage Stability :</b>	-15°C to -25°C/1 year(Do not lower than -25°C)
<b>Molecularweight :</b>	118kD
<b>Background :</b>	This locus encodes a member of the SLIT-ROBO Rho GTPase activating protein family. The encoded protein stimulates GTPase activity of Rac1, and plays a role in cortical neuron development. This locus has several paralogs on human chromosome 1 resulting from segmental duplication. While this locus itself is conserved among various species, the paralogs are found only in the genus Homo, and not in the genomes of non-human great apes. Alternatively spliced transcript variants have been described for this locus. [provided by RefSeq, Jul 2014],
<b>Function :</b>	function:Putative GTPase-activating protein for Rho family small GTPases.,similarity:Contains 1 FCH domain.,similarity:Contains 1 Rho-GAP domain.,similarity:Contains 1 SH3 domain.,subunit:Probably interacts with ROBO1.,tissue specificity:Expression at low levels in placenta, kidney, and ovary, and little or no expression in all other tissues tested.,
<b>Subcellular Location :</b>	Cell membrane . Cell projection, dendritic spine . Cell junction, synapse, postsynaptic density . Cell junction, synapse, postsynaptic cell membrane . Cell projection, lamellipodium . Cytoplasmic vesicle, phagosome . Nucleus . Cytoplasm, cytosol . Recruited to actin-rich phagosomes during phagocytosis (By similarity). Translocates from nucleus to cytoplasm during development (By similarity). .
<b>Sort :</b>	16615
<b>No4 :</b>	1
<b>Host :</b>	Rabbit
<b>Modifications :</b>	Unmodified

---

## Products Images



Western blot analysis of lysates from CACO2 cells, primary antibody was diluted at 1:1000, 4° over night