

NALD2 rabbit pAb

Catalog No :	YT6864
Reactivity :	Human;Mouse
Applications :	WB;IHC
Target :	NALD2
Gene Name :	NAALAD2
Protein Name :	NALD2
Human Gene Id :	10003
Human Swiss Prot No :	Q9Y3Q0
Mouse Gene Id :	72560
Mouse Swiss Prot No :	Q9CZR2
Immunogen :	Synthesized peptide derived from human NALD2 AA range: 9-59
Specificity :	This antibody detects endogenous levels of NALD2 at Human/Mouse
Formulation :	Liquid in PBS containing 50% glycerol, 0.5% BSA and 0.02% sodium azide.
Source :	Polyclonal, Rabbit,IgG
Dilution :	WB 1:500-2000;IHC 1:50-300
Purification :	The antibody was affinity-purified from rabbit antiserum by affinity-chromatography using epitope-specific immunogen.
Concentration :	1 mg/ml
Storage Stability :	-15°C to -25°C/1 year(Do not lower than -25°C)

Molecularweight : 81kD

Background : This gene is a member of the N-acetylated alpha-linked acidic dipeptidase (NAALADase) gene family. The representative member of this family is the gene encoding human prostate-specific membrane antigen (PSM), which is a marker of prostatic carcinomas and is the first to be shown to possess NAALADase activity. NAALADase cleaves N-acetyl-L-aspartate-L-glutamate (NAAG), which is a neuropeptide expressed both in the central nervous systems and in the periphery and is thought to function as a neurotransmitter. The product of this gene is a type II integral membrane protein. Transient transfection of this gene confers both NAALADase and dipetidyl peptidase IV activities to mammalian cells. This gene is highly expressed in ovary and testis as well as within discrete brain areas. Two transcript variants encoding different isoforms have been found for this gene. [provided by RefSeq, Jul 2014],

Function : catalytic activity:Release of an unsubstituted, C-terminal glutamyl residue, typically from Ac-Asp-Glu or folylpoly-gamma-glutamates.,cofactor:Binds 2 zinc ions per subunit. Required for NAALADase activity.,domain:The NAALADase activity is found in the central region, the dipeptidyl peptidase IV type activity in the C-terminal.,enzyme regulation:Inhibited by quisqualate.,function:Has N-acetylated-alpha-linked-acidic dipeptidase (NAALADase) activity. Also exhibits a dipeptidyl-peptidase IV type activity. Inactivate the peptide neurotransmitter N-acetylaspartylglutamate.,similarity:Belongs to the peptidase M28 family. M28B subfamily.,tissue specificity:Highest expression in the testis. Also found in ovary and spleen. Weak expression in prostate, heart and placenta. In brain, expressed in striatum, parietal cortex and ventral striatum with lower levels in hippocampus, brain stem, putamen an

Subcellular Location : Cell membrane ; Single-pass type II membrane protein .

Expression : Highest expression in the testis. Also found in ovary and spleen. Weak expression in prostate, heart and placenta. In brain, expressed in striatum, parietal cortex and ventral striatum with lower levels in hippocampus, brain stem, putamen and superior colliculus.

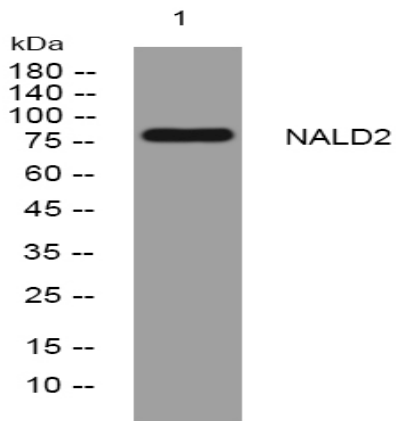
Sort : 10560

No4 : 1

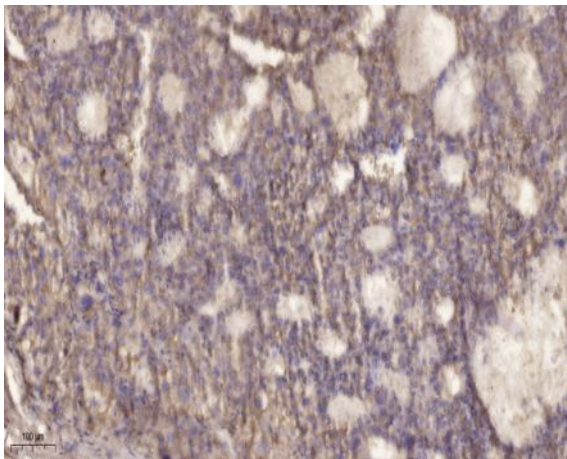
Host : Rabbit

Modifications : Unmodified

Products Images



Western blot analysis of lysates from Hela cells, primary antibody was diluted at 1:1000, 4° over night



Immunohistochemical analysis of paraffin-embedded human liver cancer. 1, Antibody was diluted at 1:200(4° overnight). 2, Tris-EDTA,pH9.0 was used for antigen retrieval. 3,Secondary antibody was diluted at 1:200(room temperature, 45min).