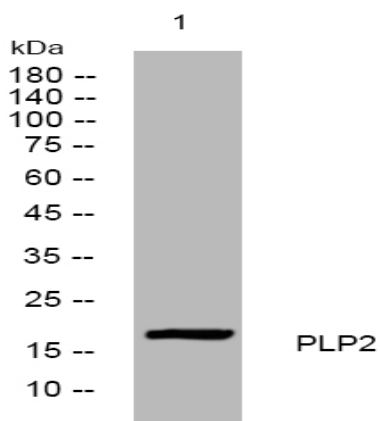


PLP2 rabbit pAb

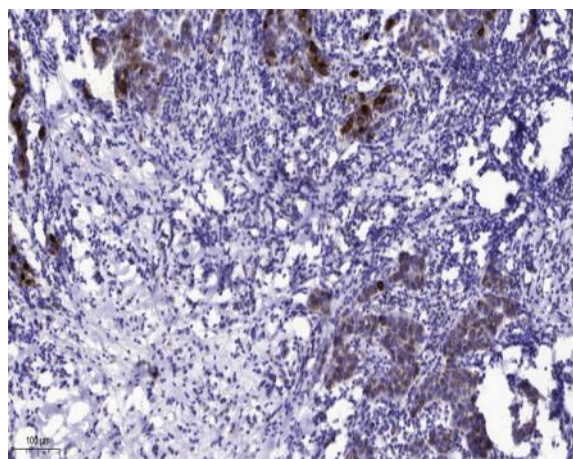
Catalog No :	YT6863
Reactivity :	Human;Mouse;Rat
Applications :	WB;ELISA;IHC
Target :	PLP2
Gene Name :	PLP2 A4
Protein Name :	PLP2
Human Gene Id :	5355
Human Swiss Prot No :	Q04941
Mouse Gene Id :	18824
Mouse Swiss Prot No :	Q9R1Q7
Rat Gene Id :	302562
Rat Swiss Prot No :	Q6P742
Immunogen :	Synthesized peptide derived from human PLP2 AA range: 56-106
Specificity :	This antibody detects endogenous levels of PLP2 at Human/Mouse/Rat
Formulation :	Liquid in PBS containing 50% glycerol, 0.5% BSA and 0.02% sodium azide.
Source :	Polyclonal, Rabbit,IgG
Dilution :	WB 1:500-2000;IHC 1:50-300; ELISA 2000-20000
Purification :	The antibody was affinity-purified from rabbit antiserum by affinity-chromatography using epitope-specific immunogen.

Concentration :	1 mg/ml
Storage Stability :	-15°C to -25°C/1 year(Do not lower than -25°C)
Molecularweight :	17kD
Background :	This gene encodes an integral membrane protein that localizes to the endoplasmic reticulum in colonic epithelial cells. The encoded protein can multimerize and may function as an ion channel. A polymorphism in the promoter of this gene may be linked to an increased risk of X-linked mental retardation. A pseudogene of this gene is found on chromosome 5. [provided by RefSeq, Jan 2010],
Function :	function:May play a role in cell differentiation in the intestinal epithelium.,similarity:Contains 1 MARVEL domain.,tissue specificity:Enriched in colonic mucosa. The expression of A4 follows a gradient along the crypto-villus axis with the most abundant message occurring in the lower half of the crypt.,
Subcellular Location :	Membrane; Multi-pass membrane protein.
Expression :	Enriched in colonic mucosa. The expression of A4 follows a gradient along the crypto-villus axis with the most abundant message occurring in the lower half of the crypt.
Sort :	12847
No4 :	1
Host :	Rabbit
Modifications :	Unmodified

Products Images



Western blot analysis of lysates from KB cells, primary antibody was diluted at 1:1000, 4° over night



Immunohistochemical analysis of paraffin-embedded human Breast cancer. 1, Antibody was diluted at 1:200(4° overnight). 2, Tris-EDTA,pH9.0 was used for antigen retrieval. 3,Secondary antibody was diluted at 1:200(room temperature, 45min).