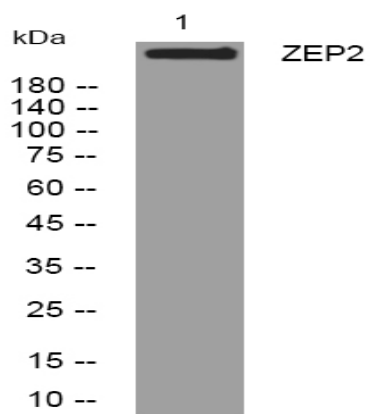


ZEP2 rabbit pAb

Catalog No :	YT6862
Reactivity :	Human;Mouse;Rat
Applications :	WB
Target :	ZEP2
Gene Name :	HIVEP2
Protein Name :	ZEP2
Human Gene Id :	3097
Human Swiss Prot No :	P31629
Mouse Gene Id :	15273
Mouse Swiss Prot No :	Q3UHF7
Rat Gene Id :	29721
Rat Swiss Prot No :	Q00900
Immunogen :	Synthesized peptide derived from human ZEP2 AA range: 1975-2025
Specificity :	This antibody detects endogenous levels of ZEP2 at Human/Mouse/Rat
Formulation :	Liquid in PBS containing 50% glycerol, 0.5% BSA and 0.02% sodium azide.
Source :	Polyclonal, Rabbit,IgG
Dilution :	WB 1:500-2000
Purification :	The antibody was affinity-purified from rabbit antiserum by affinity-chromatography using epitope-specific immunogen.

Concentration :	1 mg/ml
Storage Stability :	-15°C to -25°C/1 year(Do not lower than -25°C)
Molecularweight :	269kD
Background :	This gene encodes a member of a family of closely related, large, zinc finger-containing transcription factors. The encoded protein regulates transcription by binding to regulatory regions of various cellular and viral genes that maybe involved in growth, development and metastasis. The protein contains the ZAS domain comprised of two widely separated regions of zinc finger motifs, a stretch of highly acidic amino acids and a serine/threonine-rich sequence. [provided by RefSeq, Nov 2012],
Function :	function:This protein specifically binds to the DNA sequence 5'-GGGACTTTCC-3' which is found in the enhancer elements of numerous viral promoters such as those of SV40, CMV, or HIV1. In addition, related sequences are found in the enhancer elements of a number of cellular promoters, including those of the class I MHC, interleukin-2 receptor, somatostatin receptor II, and interferon-beta genes. It may act in T-cell activation.,induction:By mitogens and phorbol ester.,similarity:Contains 4 C2H2-type zinc fingers.,subunit:Interacts with TCF4.,tissue specificity:Expressed in brain and skeletal muscle.,
Subcellular Location :	Nucleus.
Expression :	Expressed in brain and skeletal muscle.
Sort :	24506
No4 :	1
Host :	Rabbit
Modifications :	Unmodified

Products Images



Western blot analysis of lysates from VEC cells, primary antibody was diluted at 1:1000, 4° over night