

KR191 rabbit pAb

Catalog No :	YT6857
Reactivity :	Human;Mouse
Applications :	IHC;IF
Target :	KR191
Gene Name :	KRTAP19-1 KAP19.1 KRTAP19.1
Protein Name :	KR191
Human Gene Id :	337882
Human Swiss Prot No :	Q8IUB9
Immunogen :	Synthesized peptide derived from human KR191 AA range: 36-86
Specificity :	This antibody detects endogenous levels of KR191 at Human
Formulation :	Liquid in PBS containing 50% glycerol, 0.5% BSA and 0.02% sodium azide.
Source :	Polyclonal, Rabbit,IgG
Dilution :	IHC 1:50-200. IF 1:50-200
Purification :	The antibody was affinity-purified from rabbit antiserum by affinity-chromatography using epitope-specific immunogen.
Concentration :	1 mg/ml
Storage Stability :	-15°C to -25°C/1 year(Do not lower than -25°C)
Molecularweight :	10kD
Function :	function:In the hair cortex, hair keratin intermediate filaments are embedded in an interfilamentous matrix, consisting of hair keratin-associated proteins (KRTAP), which are essential for the formation of a rigid and resistant hair shaft

through their extensive disulfide bond cross-linking with abundant cysteine residues of hair keratins. The matrix proteins include the high-sulfur and high-glycine-tyrosine keratins.,similarity:Belongs to the KRTAP type 19 family.,subunit:Interacts with hair keratins.,tissue specificity:Detected in the upper portion of the hair cortex.,

Subcellular Location :

intermediate filament,

Expression :

Detected in the upper portion of the hair cortex.

Sort :

8991

No4 :

1

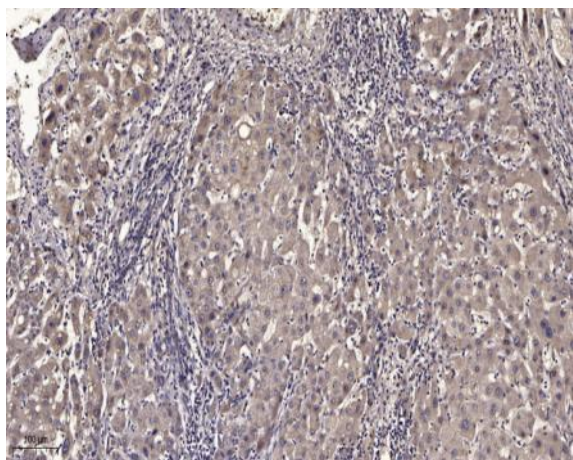
Host :

Rabbit

Modifications :

Unmodified

Products Images



Immunohistochemical analysis of paraffin-embedded human liver cancer. 1, Antibody was diluted at 1:200(4° overnight). 2, Tris-EDTA,pH9.0 was used for antigen retrieval. 3,Secondary antibody was diluted at 1:200(room temperature, 45min).