

AVPI1 rabbit pAb

Catalog No :	YT6856
Reactivity :	Human;Mouse;Rat
Applications :	WB
Target :	AVPI1
Gene Name :	AVPI1 NPD013 PP5395
Protein Name :	AVPI1
Human Gene Id :	60370
Human Swiss Prot No :	Q5T686
Mouse Gene Id :	69534
Mouse Swiss Prot No :	Q9D7H4
Rat Swiss Prot No :	Q8VDA6
Immunogen :	Synthesized peptide derived from human AVPI1 AA range: 76-126
Specificity :	This antibody detects endogenous levels of AVPI1 at Human/Mouse/Rat
Formulation :	Liquid in PBS containing 50% glycerol, 0.5% BSA and 0.02% sodium azide.
Source :	Polyclonal, Rabbit,IgG
Dilution :	WB 1[?]500-2000
Purification :	The antibody was affinity-purified from rabbit antiserum by affinity-chromatography using epitope-specific immunogen.
Concentration :	1 mg/ml

Storage Stability : -15°C to -25°C/1 year(Do not lower than -25°C)

Molecularweight : 16kD

Function : function:May be involved in MAP kinase activation, epithelial sodium channel (ENaC) down-regulation and cell cycling.,

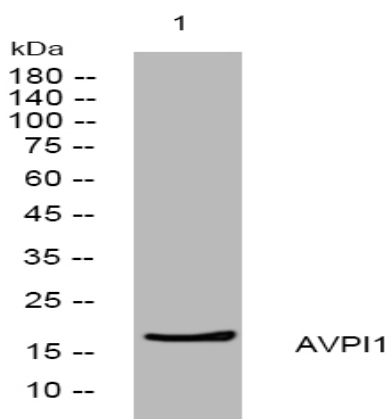
Sort : 2529

No4 : 1

Host : Rabbit

Modifications : Unmodified

Products Images



Western blot analysis of lysates from VEC cells, primary antibody was diluted at 1:1000, 4° over night