

RLF rabbit pAb

| | |
|------------------------------|--|
| Catalog No : | YT6850 |
| Reactivity : | Human |
| Applications : | WB;ELISA;IHC |
| Target : | RLF |
| Gene Name : | RLF |
| Protein Name : | RLF |
| Human Gene Id : | 6018 |
| Human Swiss Prot No : | Q13129 |
| Immunogen : | Synthesized peptide derived from human RLF AA range: 1397-1447 |
| Specificity : | This antibody detects endogenous levels of RLF at Human |
| Formulation : | Liquid in PBS containing 50% glycerol, 0.5% BSA and 0.02% sodium azide. |
| Source : | Polyclonal, Rabbit,IgG |
| Dilution : | WB 1:500-2000;IHC 1:50-300; ELISA 2000-20000 |
| Purification : | The antibody was affinity-purified from rabbit antiserum by affinity-chromatography using epitope-specific immunogen. |
| Concentration : | 1 mg/ml |
| Storage Stability : | -15°C to -25°C/1 year(Do not lower than -25°C) |
| Molecularweight : | 211kD |
| Function : | disease:In some small cell lung carcinoma (SCLC) cell lines, there is an intrachromosomal rearrangements at 1p32 fusing the first exon of the RLF gene with L-myc.,function:May be involved in transcriptional |

regulation.,similarity:Belongs to the krueppel C2H2-type zinc-finger protein family.,similarity:Contains 14 C2H2-type zinc fingers.,subunit:Interacts with RIT1 and RIT2.,tissue specificity:Widely expressed in fetal and adult tissues.,

Subcellular Location :

Nucleus .

Expression :

Widely expressed in fetal and adult tissues.

Sort :

14537

No4 :

1

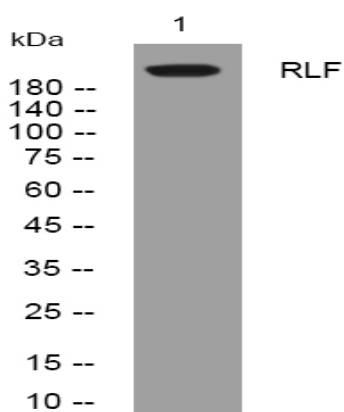
Host :

Rabbit

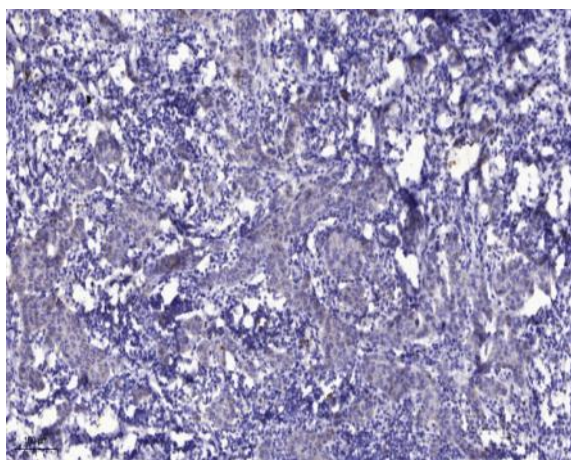
Modifications :

Unmodified

Products Images



Western blot analysis of lysates from AD293 cells, primary antibody was diluted at 1:1000, 4° over night



Immunohistochemical analysis of paraffin-embedded human Breast cancer. 1, Antibody was diluted at 1:200(4° overnight). 2, Tris-EDTA,pH9.0 was used for antigen retrieval. 3,Secondary antibody was diluted at 1:200(room temperature, 45min).