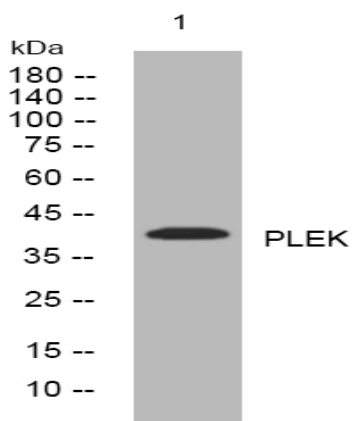


## PLEK rabbit pAb

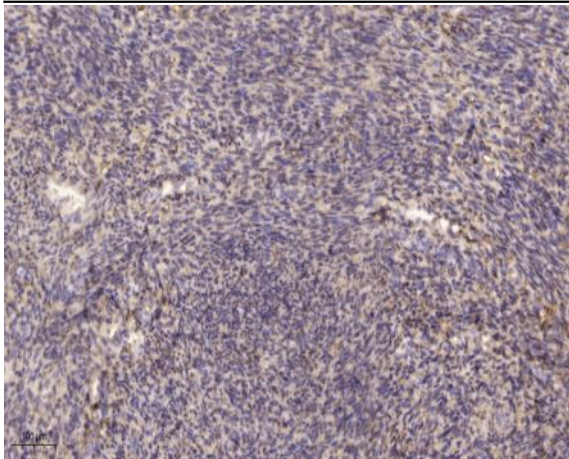
<b>Catalog No :</b>	YT6848
<b>Reactivity :</b>	Human;Mouse;Rat
<b>Applications :</b>	WB;ELISA;IHC
<b>Target :</b>	PLEK
<b>Gene Name :</b>	PLEK P47
<b>Protein Name :</b>	PLEK
<b>Human Gene Id :</b>	5341
<b>Human Swiss Prot No :</b>	P08567
<b>Mouse Gene Id :</b>	56193
<b>Mouse Swiss Prot No :</b>	Q9JHK5
<b>Rat Gene Id :</b>	364206
<b>Rat Swiss Prot No :</b>	Q4KM33
<b>Immunogen :</b>	Synthesized peptide derived from human PLEK AA range: 99-149
<b>Specificity :</b>	This antibody detects endogenous levels of PLEK at Human/Mouse/Rat
<b>Formulation :</b>	Liquid in PBS containing 50% glycerol, 0.5% BSA and 0.02% sodium azide.
<b>Source :</b>	Polyclonal, Rabbit,IgG
<b>Dilution :</b>	WB 1:500-2000;IHC 1:50-300; ELISA 2000-20000
<b>Purification :</b>	The antibody was affinity-purified from rabbit antiserum by affinity-chromatography using epitope-specific immunogen.

<b>Concentration :</b>	1 mg/ml
<b>Storage Stability :</b>	-15°C to -25°C/1 year(Do not lower than -25°C)
<b>Molecularweight :</b>	39kD
<b>Function :</b>	function:Major protein kinase C substrate of platelets, its exact function is not known.,similarity:Contains 1 DEP domain.,similarity:Contains 2 PH domains.,
<b>Subcellular Location :</b>	extracellular region,cytoplasm,cytosol,membrane,ruffle membrane,
<b>Sort :</b>	12837
<b>No4 :</b>	1
<b>Host :</b>	Rabbit
<b>Modifications :</b>	Unmodified

## Products Images



Western blot analysis of lysates from A549 cells, primary antibody was diluted at 1:1000, 4° over night



Immunohistochemical analysis of paraffin-embedded human uterus. 1, Antibody was diluted at 1:200(4° overnight). 2, Tris-EDTA,pH9.0 was used for antigen retrieval. 3,Secondary antibody was diluted at 1:200(room temperature, 45min).