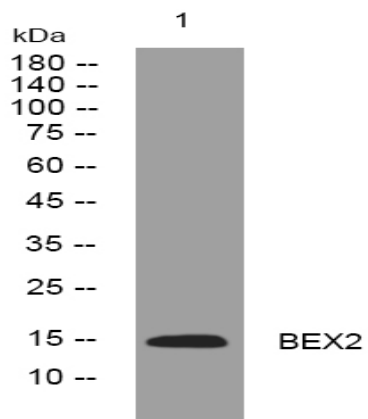


BEX2 rabbit pAb

Catalog No :	YT6847
Reactivity :	Human;Mouse;Rat
Applications :	WB
Target :	BEX2
Gene Name :	BEX2
Protein Name :	BEX2
Human Gene Id :	84707
Human Swiss Prot No :	Q9BXY8
Mouse Gene Id :	12069
Mouse Swiss Prot No :	Q9WTZ8
Rat Gene Id :	363498
Rat Swiss Prot No :	Q3MKQ1
Immunogen :	Synthesized peptide derived from human BEX2 AA range: 28-78
Specificity :	This antibody detects endogenous levels of BEX2 at Human/Mouse/Rat
Formulation :	Liquid in PBS containing 50% glycerol, 0.5% BSA and 0.02% sodium azide.
Source :	Polyclonal, Rabbit,IgG
Dilution :	WB 1:500-2000
Purification :	The antibody was affinity-purified from rabbit antiserum by affinity-chromatography using epitope-specific immunogen.

Concentration :	1 mg/ml
Storage Stability :	-15°C to -25°C/1 year(Do not lower than -25°C)
Molecularweight :	14kD
Background :	<p>This gene belongs to the brain expressed X-linked gene family. The encoded protein interacts with the transcription factor LIM domain only 2 in a DNA-binding complex that recognizes the E-box element and promotes transcription. This gene has been found to be a tumor suppressor that is silenced in human glioma. In breast cancer cells, this gene product modulates apoptosis in response to estrogen and tamoxifen, and enhances the anti-proliferative effect of tamoxifen. Multiple transcript variants encoding different isoforms have been found for this gene. [provided by RefSeq, Dec 2009],</p>
Function :	<p>caution:Was named BEX1 by some authors.,similarity:Belongs to the BEX family.,subunit:Interacts with OMP (By similarity). Interacts with LMO2, possibly leading to regulate the transcriptional activity of a DNA-binding complex containing LMO2.,tissue specificity:Expressed in central nervous system, with high level in pituitary, cerebellum and temporal lobe.,</p>
Subcellular Location :	Cytoplasm . Nucleus .
Expression :	Expressed in central nervous system, with high level in pituitary, cerebellum and temporal lobe. Widely expressed in breast cancer cell lines.
Tag :	orthogonal
Sort :	2679
No4 :	1
Host :	Rabbit
Modifications :	Unmodified

Products Images



Western blot analysis of lysates from HpeG2 cells, primary antibody was diluted at 1:1000, 4° over night