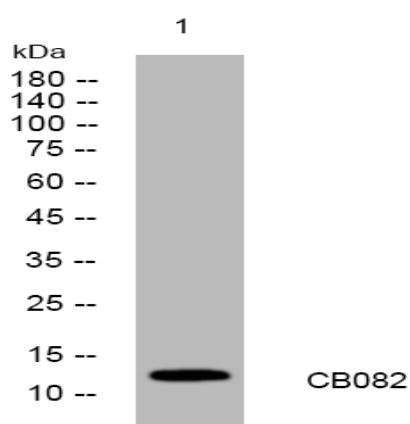


CB082 rabbit pAb

Catalog No :	YT6843
Reactivity :	Human;Mouse
Applications :	WB
Target :	CB082
Gene Name :	C2orf82 UNQ830/PRO1757
Protein Name :	CB082
Human Gene Id :	389084
Human Swiss Prot No :	Q6UX34
Mouse Gene Id :	73234
Mouse Swiss Prot No :	Q9CXL7
Immunogen :	Synthesized peptide derived from human CB082 AA range: 68-118
Specificity :	This antibody detects endogenous levels of CB082 at Human/Mouse
Formulation :	Liquid in PBS containing 50% glycerol, 0.5% BSA and 0.02% sodium azide.
Source :	Polyclonal, Rabbit,IgG
Dilution :	WB 1[?]500-2000
Purification :	The antibody was affinity-purified from rabbit antiserum by affinity-chromatography using epitope-specific immunogen.
Concentration :	1 mg/ml
Storage Stability :	-15°C to -25°C/1 year(Do not lower than -25°C)

Molecularweight :	13kD
Subcellular Location :	Membrane ; Single-pass membrane protein . Cytoplasm . Secreted, extracellular space, extracellular matrix . Appears as reticular-like structures throughout the cytoplasm and adjacent to the plasma membrane. In proliferation and hypertrophic chondrocytes, detected intracellularly and in the pericellular extracellular matrix. In primary spongiosa, detected only in the extracellular matrix. .
Expression :	Expressed in cartilage.
Sort :	3260
No4 :	1
Host :	Rabbit
Modifications :	Unmodified

Products Images



Western blot analysis of lysates from 293T cells, primary antibody was diluted at 1:1000, 4° over night