

DOXA1 rabbit pAb

Catalog No :	YT6839
Reactivity :	Human;Mouse
Applications :	WB
Target :	DOXA1
Gene Name :	DUOXA1 NIP NUMBIP
Protein Name :	DOXA1
Human Gene Id :	90527
Human Swiss Prot No :	Q1HG43
Mouse Gene Id :	213696
Mouse Swiss Prot No :	Q8VE49
Immunogen :	Synthesized peptide derived from human DOXA1 AA range: 24-74
Specificity :	This antibody detects endogenous levels of DOXA1 at Human/Mouse
Formulation :	Liquid in PBS containing 50% glycerol, 0.5% BSA and 0.02% sodium azide.
Source :	Polyclonal, Rabbit,IgG
Dilution :	WB 1:500-2000
Purification :	The antibody was affinity-purified from rabbit antiserum by affinity-chromatography using epitope-specific immunogen.
Concentration :	1 mg/ml
Storage Stability :	-15°C to -25°C/1 year(Do not lower than -25°C)

Molecularweight : 38kD

Background : Dual oxidases DUOX1 and DUOX2 are NADPH oxidases which are involved in hydrogen peroxide production necessary for thyroid hormonogenesis. They form a heterodimer with specific maturation factors DUOXA1 and DUOXA2, respectively, which is essential for the maturation and function of the DUOX enzyme complexes. This gene encodes the DUOX1 activator or maturation factor DUOXA1. Rat studies identified a bidirectional promoter which controls the transcription of the DUOX1 and DUOXA1 genes. This protein is cotransported to the cell surface when coexpressed with DUOX1 and is retained in the endoplasmic reticulum when expressed without DUOX1 protein. The expression of this gene or the DUOX1 gene is not suppressed by thyroglobulin (Tg), a macromolecular precursor in thyroid hormone synthesis, while the expression of the DUOX2 and DUOXA2 are significantly suppressed by the Tg. This protein is also a p53-regulated neurogenic factor involved in p53 dependent neuronal differentiation. Multiple alternatively spliced transcript variants encoding different isoforms have been found for this gene. [provided by RefSeq, Jan 2013],

Function : function:May be required for the maturation and the transport from the endoplasmic reticulum to the plasma membrane of functional DUOX1.,similarity:Belongs to the DUOXA family.,subunit:May interact with NUMB.,tissue specificity:Specifically expressed in thyroid gland. Also detected in esophagus.,

Subcellular Location : Membrane ; Multi-pass membrane protein .

Expression : Specifically expressed in thyroid gland. Also detected in esophagus.

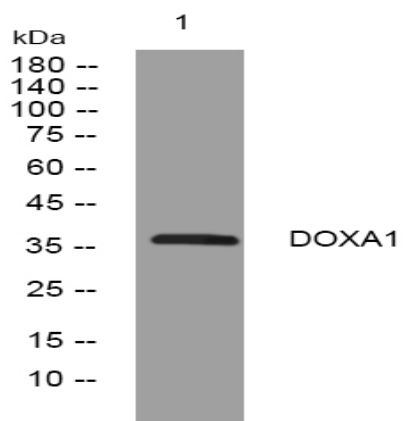
Sort : 5238

No4 : 1

Host : Rabbit

Modifications : Unmodified

Products Images



Western blot analysis of lysates from U2OS cells, primary antibody was diluted at 1:1000, 4° over night