

## ZN131 rabbit pAb

<b>Catalog No :</b>	YT6835
<b>Reactivity :</b>	Human;Mouse
<b>Applications :</b>	WB
<b>Target :</b>	ZN131
<b>Gene Name :</b>	ZNF131
<b>Protein Name :</b>	ZN131
<b>Human Gene Id :</b>	7690
<b>Human Swiss Prot No :</b>	P52739
<b>Mouse Gene Id :</b>	72465
<b>Mouse Swiss Prot No :</b>	Q8K3J5
<b>Immunogen :</b>	Synthesized peptide derived from human ZN131 AA range: 274-324
<b>Specificity :</b>	This antibody detects endogenous levels of ZN131 at Human/Mouse
<b>Formulation :</b>	Liquid in PBS containing 50% glycerol, 0.5% BSA and 0.02% sodium azide.
<b>Source :</b>	Polyclonal, Rabbit,IgG
<b>Dilution :</b>	WB 1:500-2000
<b>Purification :</b>	The antibody was affinity-purified from rabbit antiserum by affinity-chromatography using epitope-specific immunogen.
<b>Concentration :</b>	1 mg/ml
<b>Storage Stability :</b>	-15°C to -25°C/1 year(Do not lower than -25°C)

**Molecularweight :** 69kD

**Function :** function:May be involved in transcriptional regulation. Plays a role during development and organogenesis as well as in the function of the adult central nervous system.,similarity:Belongs to the krueppel C2H2-type zinc-finger protein family.,similarity:Contains 1 BTB (POZ) domain.,similarity:Contains 6 C2H2-type zinc fingers.,tissue specificity:Predominant expression is found in diferent brain areas such as the occipital and temporal lobe, the nucleus caudatus, hippocampus, and the cerebellum as well as in testis and thymus.,

**Subcellular Location :** Nucleus . Sumoylation does not affect nuclear localization.

**Expression :** Predominant expression is found in different brain areas such as the occipital and temporal lobe, the nucleus caudatus, hippocampus, and the cerebellum as well as in testis and thymus.

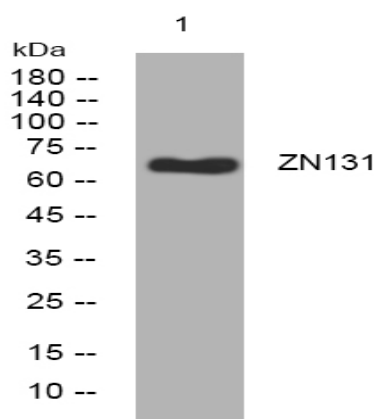
**Sort :** 24558

**No4 :** 1

**Host :** Rabbit

**Modifications :** Unmodified

## Products Images



Western blot analysis of lysates from HpeG2 cells, primary antibody was diluted at 1:1000, 4° over night