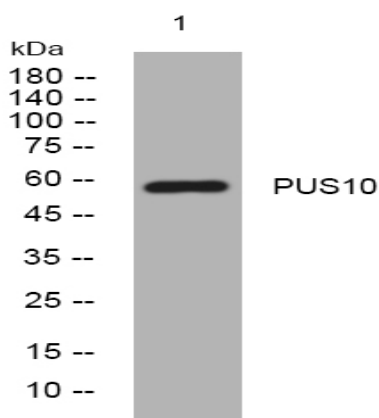


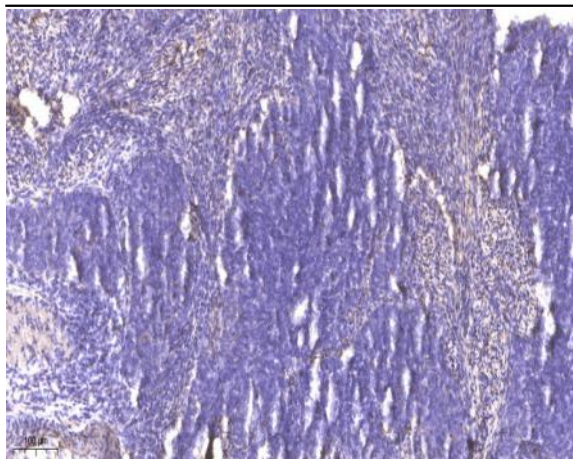
PUS10 rabbit pAb

Catalog No :	YT6833
Reactivity :	Human;Mouse
Applications :	WB;ELISA;IHC
Target :	PUS10
Gene Name :	PUS10 CCDC139 DOBI
Protein Name :	PUS10
Human Gene Id :	150962
Human Swiss Prot No :	Q3MIT2
Mouse Gene Id :	74467
Mouse Swiss Prot No :	Q9D3U0
Immunogen :	Synthesized peptide derived from human PUS10 AA range: 425-475
Specificity :	This antibody detects endogenous levels of PUS10 at Human/Mouse
Formulation :	Liquid in PBS containing 50% glycerol, 0.5% BSA and 0.02% sodium azide.
Source :	Polyclonal, Rabbit,IgG
Dilution :	WB 1:500-2000;IHC 1:50-300; ELISA 2000-20000
Purification :	The antibody was affinity-purified from rabbit antiserum by affinity-chromatography using epitope-specific immunogen.
Concentration :	1 mg/ml
Storage Stability :	-15°C to -25°C/1 year(Do not lower than -25°C)

Molecularweight : 58kD**Background :** Pseudouridination, the isomerization of uridine to pseudouridine, is the most common posttranscriptional nucleotide modification found in RNA and is essential for biologic functions such as spliceosome biogenesis. Pseudouridylate synthases, such as PUS10, catalyze pseudouridination of structural RNAs, including transfer, ribosomal, and splicing RNAs. These enzymes also act as RNA chaperones, facilitating the correct folding and assembly of tRNAs (McCleverty et al., 2007 [PubMed 17900615]).[supplied by OMIM, May 2009],**Function :** catalytic activity:tRNA uridine = tRNA pseudouridine.,function:Responsible for synthesis of pseudouridine from uracil-55 in the psi GC loop of transfer RNAs.,PTM:Phosphorylated upon DNA damage, probably by ATM or ATR.,sequence caution:Partially unspliced pre-RNA.,similarity:Belongs to the pseudouridine synthase Pus10 family.,**Subcellular Location :** Nucleus . Cytoplasm . Mitochondrion . Localizes mainly in the nucleus (Probable) (PubMed:31819270). tRNA pseudouridylate synthase activity is restricted to the cytoplasm (PubMed:31819270). Translocates from nucleus to mitochondria during TRAIL-induced apoptosis (PubMed:28981101) .**Sort :** 13171**No4 :** 1**Host :** Rabbit**Modifications :** Unmodified

Products Images





Immunohistochemical analysis of paraffin-embedded human cervical carcinoma. 1, Antibody was diluted at 1:200(4° overnight). 2, Tris-EDTA,pH9.0 was used for antigen retrieval. 3,Secondary antibody was diluted at 1:200(room temperature, 45min).