

ZN681 rabbit pAb

Catalog No :	YT6832
Reactivity :	Human
Applications :	WB
Target :	ZN681
Gene Name :	ZNF681
Protein Name :	ZN681
Human Gene Id :	148213
Human Swiss Prot No :	Q96N22
Immunogen :	Synthesized peptide derived from human ZN681 AA range: 178-228
Specificity :	This antibody detects endogenous levels of ZN681 at Human
Formulation :	Liquid in PBS containing 50% glycerol, 0.5% BSA and 0.02% sodium azide.
Source :	Polyclonal, Rabbit,IgG
Dilution :	WB 1[?]500-2000
Purification :	The antibody was affinity-purified from rabbit antiserum by affinity-chromatography using epitope-specific immunogen.
Concentration :	1 mg/ml
Storage Stability :	-15°C to -25°C/1 year(Do not lower than -25°C)
Molecularweight :	71kD
Function :	function:May be involved in transcriptional regulation.,sequence caution:Contaminating sequence. Potential poly-A sequence.,similarity:Belongs to the krueppel C2H2-type zinc-finger protein family.,similarity:Contains 16

C2H2-type zinc fingers.,

Subcellular Location :

Nucleus .

Sort :

24670

No4 :

1

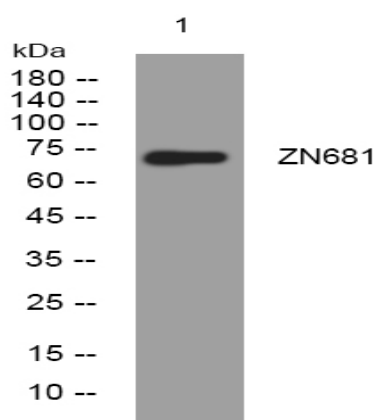
Host :

Rabbit

Modifications :

Unmodified

Products Images



Western blot analysis of lysates from THP-1 cells, primary antibody was diluted at 1:1000, 4° over night