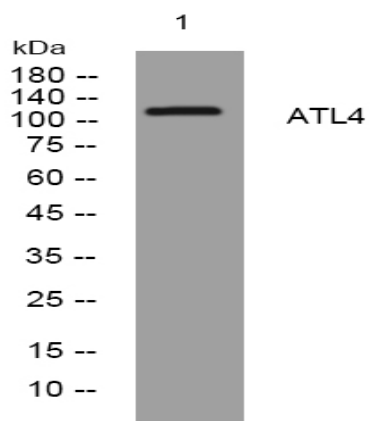


ADAMTSL4 rabbit pAb

Catalog No :	YT6831
Reactivity :	Human;Mouse;Rat
Applications :	WB
Target :	ADAMTSL4
Gene Name :	ADAMTSL4 TSRC1 PP1396 UNQ2803/PRO34012
Protein Name :	ADAMTSL4
Human Gene Id :	54507
Human Swiss Prot No :	Q6UY14
Mouse Gene Id :	229595
Mouse Swiss Prot No :	Q80T21
Rat Gene Id :	310670
Rat Swiss Prot No :	Q4FZU4
Immunogen :	Synthesized peptide derived from human ATL4 AA range: 78-128
Specificity :	This antibody detects endogenous levels of ATL4 at Human/Mouse/Rat
Formulation :	Liquid in PBS containing 50% glycerol, 0.5% BSA and 0.02% sodium azide.
Source :	Polyclonal, Rabbit,IgG
Dilution :	WB 1:500-2000
Purification :	The antibody was affinity-purified from rabbit antiserum by affinity-chromatography using epitope-specific immunogen.

Concentration :	1 mg/ml
Storage Stability :	-15°C to -25°C/1 year(Do not lower than -25°C)
Molecularweight :	118kD
Background :	This gene is a member of ADAMTS (a disintegrin and metalloproteinase with thrombospondin motifs)-like gene family and encodes a protein with seven thrombospondin type 1 repeats. The thrombospondin type 1 repeat domain is found in many proteins with diverse biological functions including cellular adhesion, angiogenesis, and patterning of the developing nervous system. Alternate transcriptional splice variants, encoding different isoforms, have been characterized. [provided by RefSeq, Sep 2014],
Function :	caution:Although similar to members of the ADAMTS family, it lacks the metalloprotease and disintegrin-like domains which are typical of that family.,function:Positive regulation of apoptosis.,similarity:Contains 1 PLAC domain.,similarity:Contains 6 TSP type-1 domains.,subunit:Interacts with CTSB.,
Subcellular Location :	Secreted, extracellular space, extracellular matrix . Colocalizes with FMN1 microfibrils in the eye ECM.
Expression :	Expressed in colon, heart, leukocyte, liver, lung, skeletal muscle, spleen, testis and placenta. Weaker expression in bone marrow, brain tissue, kidney and pancreas. Expression studies in fetal tissues reveal strong expression in heart, kidney, liver, lung and skeletal muscle, but weaker expression in fetal brain and skin.
Sort :	2409
No4 :	1
Host :	Rabbit
Modifications :	Unmodified

Products Images



Western blot analysis of lysates from PC-12 cells, primary antibody was diluted at 1:1000, 4° over night