

CPSF2 rabbit pAb

Catalog No :	YT6830
Reactivity :	Human;Mouse
Applications :	WB
Target :	CPSF2
Fields :	>>mRNA surveillance pathway
Gene Name :	CPSF2 CPSF100 KIAA1367
Protein Name :	CPSF2
Human Gene Id :	53981
Human Swiss Prot No :	Q9P2I0
Mouse Gene Id :	51786
Mouse Swiss Prot No :	O35218
Immunogen :	Synthesized peptide derived from human CPSF2 AA range: 456-506
Specificity :	This antibody detects endogenous levels of CPSF2 at Human/Mouse
Formulation :	Liquid in PBS containing 50% glycerol, 0.5% BSA and 0.02% sodium azide.
Source :	Polyclonal, Rabbit,IgG
Dilution :	WB 1[?]500-2000
Purification :	The antibody was affinity-purified from rabbit antiserum by affinity-chromatography using epitope-specific immunogen.
Concentration :	1 mg/ml

Storage Stability : -15°C to -25°C/1 year(Do not lower than -25°C)

Molecularweight : 86kD

Function : function:Component of the cleavage and polyadenylation specificity factor (CPSF) complex that play a key role in pre-mRNA 3'-end formation, recognizing the AAUAAA signal sequence and interacting with poly(A) polymerase and other factors to bring about cleavage and poly(A) addition.,similarity:Belongs to the metallo-beta-lactamase superfamily. RNA-metabolizing metallo-beta-lactamase-like family. CPSF2/YSH1 subfamily.,subunit:Component of the cleavage and polyadenylation specificity factor (CPSF) complex, composed of CPSF1, CPSF2, CPSF3, CPSF4 and FIP1L1.,

Subcellular Location : Nucleus .

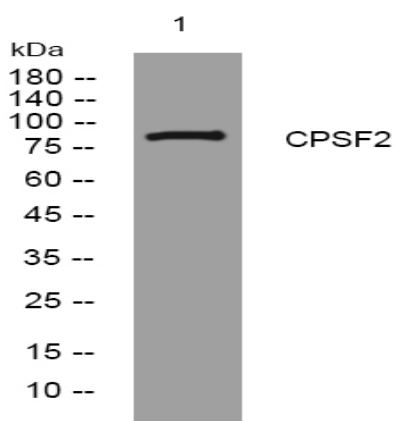
Sort : 4518

No4 : 1

Host : Rabbit

Modifications : Unmodified

Products Images



Western blot analysis of lysates from MCF-7 cells, primary antibody was diluted at 1:1000, 4° over night