

NAA20 rabbit pAb

Catalog No :	YT6829
Reactivity :	Human;Mouse
Applications :	WB;ELISA;IHC
Target :	NAA20
Gene Name :	NAA20 NAT5
Protein Name :	NAA20
Human Gene Id :	51126
Human Swiss Prot No :	P61599
Mouse Gene Id :	67877
Mouse Swiss Prot No :	P61600
Immunogen :	Synthesized peptide derived from human NAA20 AA range: 93-143
Specificity :	This antibody detects endogenous levels of NAA20 at Human/Mouse
Formulation :	Liquid in PBS containing 50% glycerol, 0.5% BSA and 0.02% sodium azide.
Source :	Polyclonal, Rabbit,IgG
Dilution :	WB 1:500-2000;IHC 1:50-300; ELISA 2000-20000
Purification :	The antibody was affinity-purified from rabbit antiserum by affinity-chromatography using epitope-specific immunogen.
Concentration :	1 mg/ml
Storage Stability :	-15°C to -25°C/1 year(Do not lower than -25°C)

Molecularweight : 20kD

Background : NAT5 is a component of N-acetyltransferase complex B (NatB). Human NatB performs cotranslational N(alpha)-terminal acetylation of methionine residues when they are followed by asparagine (Starheim et al., 2008 [PubMed 18570629]).[supplied by OMIM, Apr 2009],

Function : function:Seems to be involved in N-acetylation.,similarity:Belongs to the acetyltransferase family. ARD1 subfamily.,similarity:Contains 1 N-acetyltransferase domain.,

Subcellular Location : Cytoplasm . Nucleus .

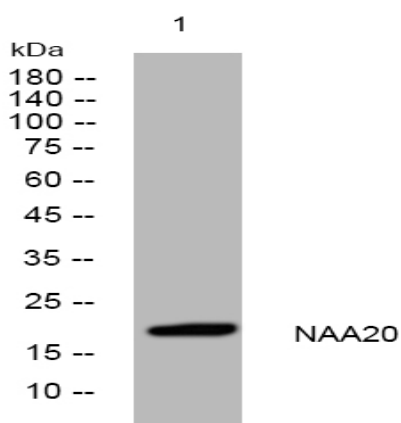
Sort : 10548

No4 : 1

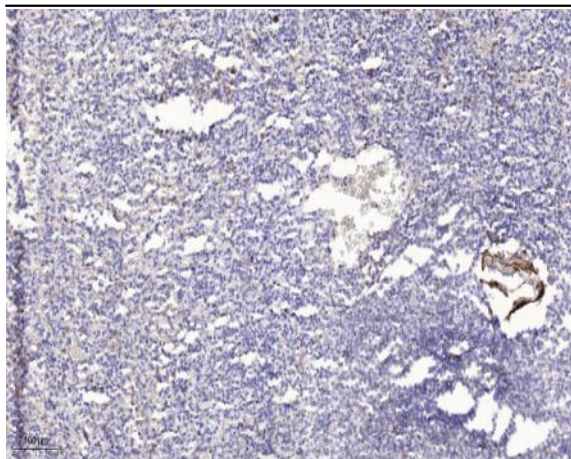
Host : Rabbit

Modifications : Unmodified

Products Images



Western blot analysis of lysates from 3T3 cells, primary antibody was diluted at 1:1000, 4° over night



Immunohistochemical analysis of paraffin-embedded human spleen. 1, Antibody was diluted at 1:200(4° overnight). 2, Tris-EDTA,pH9.0 was used for antigen retrieval. 3,Secondary antibody was diluted at 1:200(room temperature, 45min).