

BTG1 rabbit pAb

Catalog No :	YT6828
Reactivity :	Human;Mouse;Rat
Applications :	WB
Target :	BTG1
Fields :	>>RNA degradation
Gene Name :	BTG1
Protein Name :	BTG1
Human Gene Id :	694
Human Swiss Prot No :	P62324
Mouse Gene Id :	12226
Mouse Swiss Prot No :	P62325
Rat Gene Id :	29618
Rat Swiss Prot No :	Q63073
Immunogen :	Synthesized peptide derived from human BTG1 AA range: 27-77
Specificity :	This antibody detects endogenous levels of BTG1 at Human/Mouse/Rat
Formulation :	Liquid in PBS containing 50% glycerol, 0.5% BSA and 0.02% sodium azide.
Source :	Polyclonal, Rabbit,IgG
Dilution :	WB 1[?]500-2000
Purification :	The antibody was affinity-purified from rabbit antiserum by affinity-

chromatography using epitope-specific immunogen.

Concentration : 1 mg/ml

Storage Stability : -15°C to -25°C/1 year(Do not lower than -25°C)

Molecularweight : 19kD

Background : This gene is a member of an anti-proliferative gene family that regulates cell growth and differentiation. Expression of this gene is highest in the G0/G1 phases of the cell cycle and downregulated when cells progressed through G1. The encoded protein interacts with several nuclear receptors, and functions as a coactivator of cell differentiation. This locus has been shown to be involved in a t(8;12)(q24;q22) chromosomal translocation in a case of B-cell chronic lymphocytic leukemia. [provided by RefSeq, Oct 2008],

Function : developmental stage:Its expression is associated with the early G1 phase of the cell cycle.,disease:A chromosomal aberration involving BTG1 may be a cause of a form of B-cell chronic lymphocytic leukemia. Translocation t(8;12)(q24;q22) with MYC.,function:Anti-proliferative protein.,similarity:Belongs to the BTG family.,

Subcellular Location : nucleus,cytoplasm,

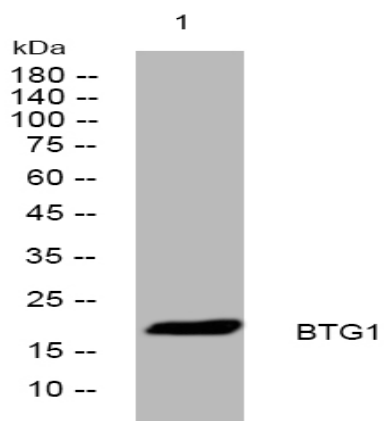
Sort : 2895

No4 : 1

Host : Rabbit

Modifications : Unmodified

Products Images



Western blot analysis of lysates from A549 cells, primary antibody was diluted at 1:1000, 4° over night