

## PM2PB rabbit pAb

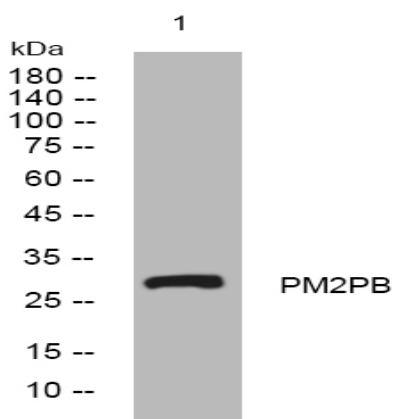
<b>Catalog No :</b>	YT6827
<b>Reactivity :</b>	Human
<b>Applications :</b>	WB;IHC
<b>Target :</b>	PM2PB
<b>Gene Name :</b>	PMS2P11 PMS2L11 PMSR6
<b>Protein Name :</b>	PM2PB
<b>Human Swiss Prot No :</b>	Q13670
<b>Immunogen :</b>	Synthesized peptide derived from human PM2PB AA range: 218-268
<b>Specificity :</b>	This antibody detects endogenous levels of PM2PB at Human
<b>Formulation :</b>	Liquid in PBS containing 50% glycerol, 0.5% BSA and 0.02% sodium azide.
<b>Source :</b>	Polyclonal, Rabbit,IgG
<b>Dilution :</b>	WB 1:500-2000;IHC 1:50-300
<b>Purification :</b>	The antibody was affinity-purified from rabbit antiserum by affinity-chromatography using epitope-specific immunogen.
<b>Concentration :</b>	1 mg/ml
<b>Storage Stability :</b>	-15°C to -25°C/1 year(Do not lower than -25°C)
<b>Molecularweight :</b>	30kD
<b>Subcellular Location :</b>	MutLalpha complex,
<b>Sort :</b>	12850

---

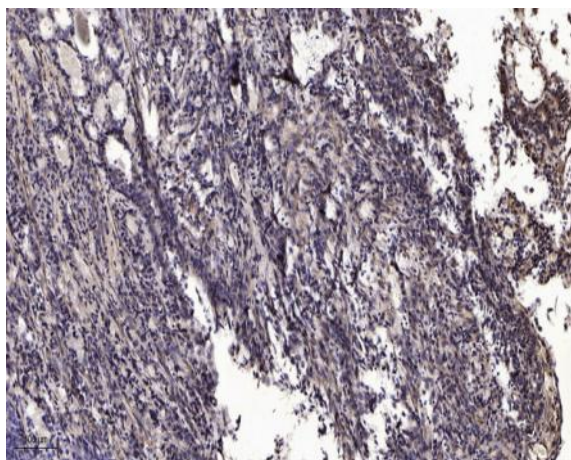
<b>No4 :</b>	<u>1</u>
<b>Host :</b>	<u>Rabbit</u>
<b>Modifications :</b>	<u>Unmodified</u>

---

## Products Images



Western blot analysis of lysates from HuvEc cells, primary antibody was diluted at 1:1000, 4° over night



Immunohistochemical analysis of paraffin-embedded human Gastric adenocarcinoma. 1, Antibody was diluted at 1:200(4° overnight). 2, Tris-EDTA,pH9.0 was used for antigen retrieval. 3,Secondary antibody was diluted at 1:200(room temperature, 45min).