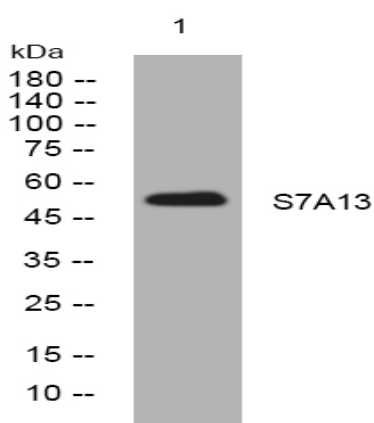


S7A13 rabbit pAb

Catalog No :	YT6826
Reactivity :	Human;Mouse;Rat
Applications :	WB
Target :	S7A13
Gene Name :	SLC7A13 AGT1 XAT2
Protein Name :	S7A13
Human Gene Id :	157724
Human Swiss Prot No :	Q8TCU3
Mouse Gene Id :	74087
Mouse Swiss Prot No :	Q91WN3
Rat Gene Id :	313089
Rat Swiss Prot No :	Q5RKI7
Immunogen :	Synthesized peptide derived from human S7A13 AA: 20-50
Specificity :	This antibody detects endogenous levels of S7A13 at Human/Mouse/Rat
Formulation :	Liquid in PBS containing 50% glycerol, 0.5% BSA and 0.02% sodium azide.
Source :	Polyclonal, Rabbit,IgG
Dilution :	WB 1:500-2000
Purification :	The antibody was affinity-purified from rabbit antiserum by affinity-chromatography using epitope-specific immunogen.

Concentration :	1 mg/ml
Storage Stability :	-15°C to -25°C/1 year(Do not lower than -25°C)
Molecularweight :	52kD
Function :	function:Mediates the transport L-aspartate and L-glutamate in a sodium-independent manner.,similarity:Belongs to the amino acid-polyamine-organocation (APC) superfamily.,tissue specificity:Expressed in the kidney.,
Subcellular Location :	Membrane ; Multi-pass membrane protein .
Expression :	Expressed in the kidney.
Sort :	14738
No4 :	1
Host :	Rabbit
Modifications :	Unmodified

Products Images



Western blot analysis of lysates from HeLa cells, primary antibody was diluted at 1:1000, 4° over night