

S26A7 rabbit pAb

Catalog No :	YT6825
Reactivity :	Human;Mouse
Applications :	WB
Target :	S26A7
Fields :	>>Gastric acid secretion
Gene Name :	SLC26A7 SUT2
Protein Name :	S26A7
Human Gene Id :	115111
Human Swiss Prot No :	Q8TE54
Mouse Gene Id :	208890
Mouse Swiss Prot No :	Q8R2Z3
Immunogen :	Synthesized peptide derived from human S26A7 AA range: 595-645
Specificity :	This antibody detects endogenous levels of S26A7 at Human/Mouse
Formulation :	Liquid in PBS containing 50% glycerol, 0.5% BSA and 0.02% sodium azide.
Source :	Polyclonal, Rabbit,IgG
Dilution :	WB 1[?]500-2000
Purification :	The antibody was affinity-purified from rabbit antiserum by affinity-chromatography using epitope-specific immunogen.
Concentration :	1 mg/ml

Storage Stability : -15°C to -25°C/1 year(Do not lower than -25°C)

Molecularweight : 72kD

Background : This gene is one member of a family of sulfate/anion transporter genes. Family members are well conserved in gene structure and protein length yet have markedly different tissue expression patterns. This gene has abundant and specific expression in the kidney. Alternatively spliced transcript variants that encode different isoforms have been described. [provided by RefSeq, Aug 2013],

Function : function:Acts as a sodium-independent DIDS-sensitive anion exchanger mediating bicarbonate, chloride, sulfate and oxalate transport. May play a role in the maintenance of the electrolyte and acid-base homeostasis in the kidney, by acting as a distal excretory segment-specific anion exchanger. Plays a major role in gastric acid secretion.,miscellaneous:Is active at both alkaline and acidic pH. Activity is inhibited by 4,4'-Di-isothiocyanatostilbene-2,2'-disulfonic acid (DIDS - an inhibitor of several anionic channels and transporters).,similarity:Belongs to the SLC26A/SulP transporter (TC 2.A.53) family.,similarity:Contains 1 STAS domain.,subcellular location:Expressed in the cytoplasm in recycling endosomes of medullary collecting duct cells and in acid-secreting gastric parietal cells. Targeted to the basolateral membrane in hypertonicity and potassium depletion.,tissue specificity:Expr

Subcellular Location : Recycling endosome membrane ; Multi-pass membrane protein . Expressed in the cytoplasm in recycling endosomes of medullary collecting duct cells and in acid-secreting gastric parietal cells. Targeted to the basolateral membrane in hypertonicity and potassium depletion. .

Expression : Expressed in tonsillar high endothelial venule endothelial cells (HEVEC), placenta and in testis, expressed in a subgroup of basal cells in the epididymal ducts.

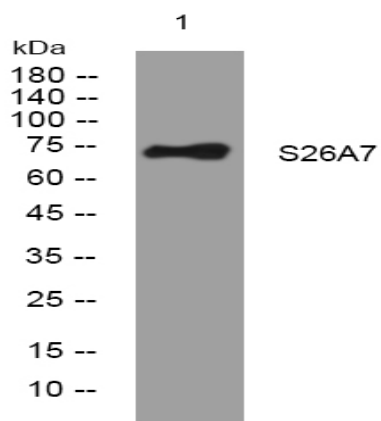
Sort : 14722

No4 : 1

Host : Rabbit

Modifications : Unmodified

Products Images



Western blot analysis of lysates from HpeG2 cells, primary antibody was diluted at 1:1000, 4° over night