

U17L5 rabbit pAb

Catalog No :	YT6822
Reactivity :	Human
Applications :	WB
Target :	U17L5
Gene Name :	USP17L5
Protein Name :	U17L5
Human Gene Id :	728386
Human Swiss Prot No :	A8MUK1
Immunogen :	Synthesized peptide derived from human U17L5 AA range: 308-358
Specificity :	This antibody detects endogenous levels of U17L5 at Human
Formulation :	Liquid in PBS containing 50% glycerol, 0.5% BSA and 0.02% sodium azide.
Source :	Polyclonal, Rabbit,IgG
Dilution :	WB 1[?]500-2000
Purification :	The antibody was affinity-purified from rabbit antiserum by affinity-chromatography using epitope-specific immunogen.
Concentration :	1 mg/ml
Storage Stability :	-15 °C to -25 °C/1 year(Do not lower than -25 °C)
Molecularweight :	58kD
Function :	catalytic activity:Ubiquitin C-terminal thioester + H(2)O = ubiquitin + a thiol.,caution:The RS447 megasatellite DNA is a highly polymorphic conserved tandem repetitive sequence which contains a copy of USP17. It is present with an

interindividual variation in copy number and between 20 to 103 copies can be found in the genome both on chromosome 4 and chromosome 8.,function:Functions in cell apoptosis. Cleaves ubiquitin fusion protein substrates.,similarity:Belongs to the peptidase C19 family. USP17 subfamily.,

Subcellular Location :

Nucleus . Endoplasmic reticulum .

Sort :

23814

No4 :

1

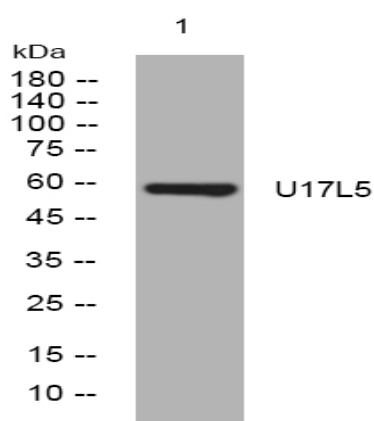
Host :

Rabbit

Modifications :

Unmodified

Products Images



Western blot analysis of lysates from 3T3 cells, primary antibody was diluted at 1:1000, 4° over night