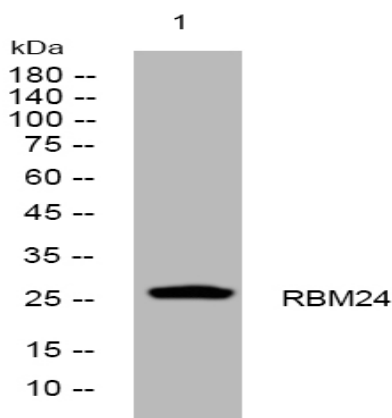


RBM24 rabbit pAb

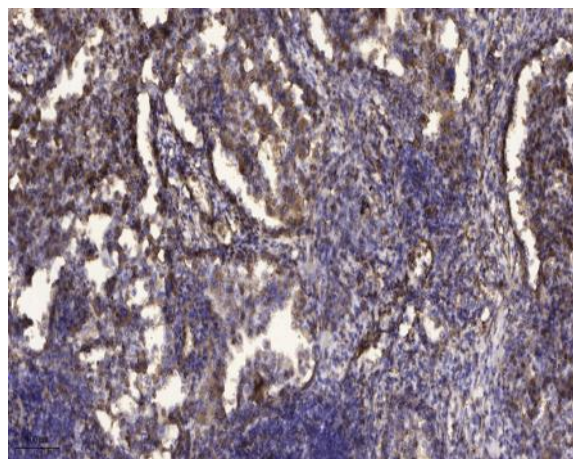
Catalog No :	YT6821
Reactivity :	Human;Mouse
Applications :	WB;IHC
Target :	RBM24
Gene Name :	RBM24 RNPC6
Protein Name :	RBM24
Human Gene Id :	221662
Human Swiss Prot No :	Q9BX46
Mouse Gene Id :	666794
Mouse Swiss Prot No :	D3Z4I3
Immunogen :	Synthesized peptide derived from human RBM24 AA range: 48-98
Specificity :	This antibody detects endogenous levels of RBM24 at Human/Mouse
Formulation :	Liquid in PBS containing 50% glycerol, 0.5% BSA and 0.02% sodium azide.
Source :	Polyclonal, Rabbit,IgG
Dilution :	WB 1:500-2000;IHC 1:50-300
Purification :	The antibody was affinity-purified from rabbit antiserum by affinity-chromatography using epitope-specific immunogen.
Concentration :	1 mg/ml
Storage Stability :	-15°C to -25°C/1 year(Do not lower than -25°C)

Molecularweight :	26kD
Function :	similarity:Contains 1 RRM (RNA recognition motif) domain.,
Subcellular Location :	Nucleus . Cytoplasm .
Expression :	Expressed in fetal and adult heart and skeletal muscles (PubMed:22345307, PubMed:25313962).
Sort :	14047
No4 :	1
Host :	Rabbit
Modifications :	Unmodified

Products Images



Western blot analysis of lysates from 293T cells, primary antibody was diluted at 1:1000, 4° over night



Immunohistochemical analysis of paraffin-embedded human Squamous cell carcinoma of lung. 1, Antibody was diluted at 1:200(4° overnight). 2, Tris-EDTA,pH9.0 was used for antigen retrieval. 3,Secondary antibody was diluted at 1:200(room temperature, 45min).