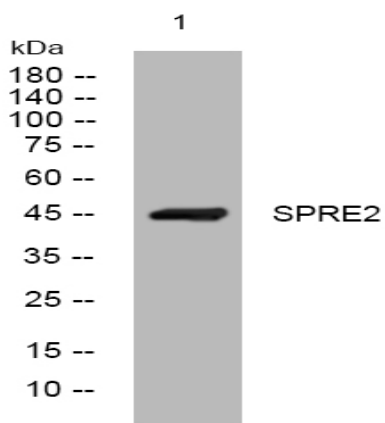


SPRE2 rabbit pAb

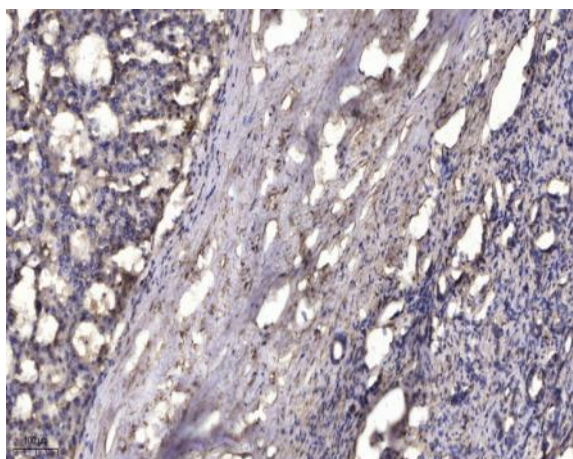
Catalog No :	YT6816
Reactivity :	Human;Mouse;Rat
Applications :	WB;IHC
Target :	SPRE2
Gene Name :	SPRED2
Protein Name :	SPRE2
Human Gene Id :	200734
Human Swiss Prot No :	Q7Z698
Mouse Gene Id :	114716
Mouse Swiss Prot No :	Q924S7
Rat Gene Id :	305539
Rat Swiss Prot No :	Q3C2P8
Immunogen :	Synthesized peptide derived from human SPRE2 AA range: 68-118
Specificity :	This antibody detects endogenous levels of SPRE2 at Human/Mouse/Rat
Formulation :	Liquid in PBS containing 50% glycerol, 0.5% BSA and 0.02% sodium azide.
Source :	Polyclonal, Rabbit,IgG
Dilution :	WB 1:500-2000;IHC 1:50-300
Purification :	The antibody was affinity-purified from rabbit antiserum by affinity-chromatography using epitope-specific immunogen.

Concentration :	1 mg/ml
Storage Stability :	-15°C to -25°C/1 year(Do not lower than -25°C)
Molecularweight :	46kD
Background :	SPRED2 is a member of the Sprouty (see SPRY1; MIM 602465)/SPRED family of proteins that regulate growth factor-induced activation of the MAP kinase cascade (see MAPK1; MIM 176948) (Nonami et al., 2004 [PubMed 15465815]).[supplied by OMIM, Mar 2008],
Function :	function:Tyrosine kinase substrate that inhibits growth-factor-mediated activation of MAP kinase.,PTM:Phosphorylated on tyrosine. Phosphorylation of Tyr-228 and Tyr-231 are required for ubiquitination.,PTM:Ubiquitinated; leading to degradation by the proteasome.,similarity:Contains 1 KBD domain.,similarity:Contains 1 SPR (sprouty) domain.,similarity:Contains 1 WH1 domain.,subcellular location:Especially found in the cytoplasm of the stratum spinosum cells called membrane-coated granules.,subunit:Interacts with Ras (By similarity). Homodimer and heterodimer. Able to interact with SPRED1 to form heterodimers.,tissue specificity:Expressed in liver, skin, small intestine, salivary gland and prostate.,
Subcellular Location :	Cell membrane ; Peripheral membrane protein ; Cytoplasmic side . Cytoplasmic vesicle, secretory vesicle membrane ; Peripheral membrane protein ; Cytoplasmic side . Cytoplasm . Detected in the cytoplasm of the stratum spinosum cells, where it is associated with cytoplasmic vesicles that are supposed to be secretory granules. .
Expression :	Expressed in liver, skin, small intestine, salivary gland and prostate.
Sort :	16560
No4 :	1
Host :	Rabbit
Modifications :	Unmodified

Products Images



Western blot analysis of lysates from KB cells, primary antibody was diluted at 1:1000, 4° over night



Immunohistochemical analysis of paraffin-embedded human liver cancer. 1, Antibody was diluted at 1:200(4° overnight). 2, Tris-EDTA,pH9.0 was used for antigen retrieval. 3,Secondary antibody was diluted at 1:200(room temperature, 45min).