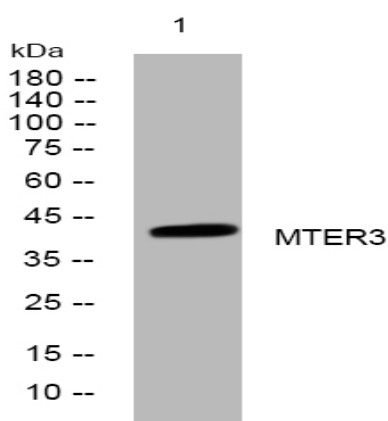


MTER3 rabbit pAb

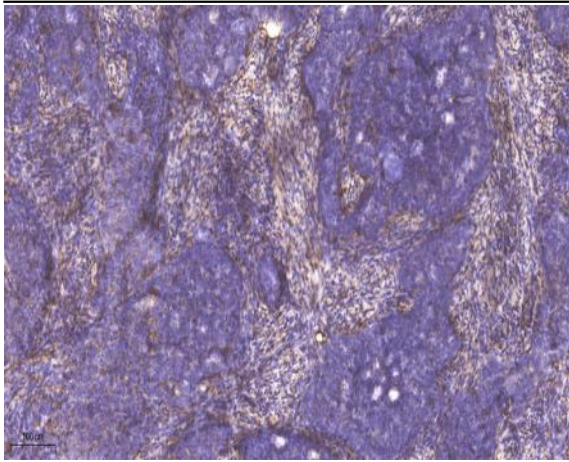
Catalog No :	YT6815
Reactivity :	Human;Mouse;Rat
Applications :	WB;ELISA;IHC
Target :	MTER3
Gene Name :	MTERFD3
Protein Name :	MTER3
Human Gene Id :	80298
Human Swiss Prot No :	Q49AM1
Mouse Gene Id :	74238
Mouse Swiss Prot No :	Q8BKY8
Rat Gene Id :	366856
Rat Swiss Prot No :	Q5XIE2
Immunogen :	Synthesized peptide derived from human MTER3 AA range: 238-288
Specificity :	This antibody detects endogenous levels of MTER3 at Human/Mouse/Rat
Formulation :	Liquid in PBS containing 50% glycerol, 0.5% BSA and 0.02% sodium azide.
Source :	Polyclonal, Rabbit,IgG
Dilution :	WB 1:500-2000;IHC 1:50-300; ELISA 2000-20000
Purification :	The antibody was affinity-purified from rabbit antiserum by affinity-chromatography using epitope-specific immunogen.

Concentration :	1 mg/ml
Storage Stability :	-15°C to -25°C/1 year(Do not lower than -25°C)
Molecularweight :	42kD
Function :	function:Involved in cell cycle regulation. May participate in the regulation of cell growth through the modulation of mitochondrial transcription. May act as a transcription termination factor.,similarity:Belongs to the mTERF family.,tissue specificity:Expressed in skeletal muscle, heart, liver and pancreas.,
Subcellular Location :	Mitochondrion . Mitochondrion matrix, mitochondrion nucleoid .
Expression :	Expressed in skeletal muscle, heart, liver and pancreas.
Sort :	10317
No4 :	1
Host :	Rabbit
Modifications :	Unmodified

Products Images



Western blot analysis of lysates from SH-SY5Y cells, primary antibody was diluted at 1:1000, 4° over night



Immunohistochemical analysis of paraffin-embedded human cervical carcinoma. 1, Antibody was diluted at 1:200(4° overnight). 2, Tris-EDTA,pH9.0 was used for antigen retrieval. 3,Secondary antibody was diluted at 1:200(room temperature, 45min).