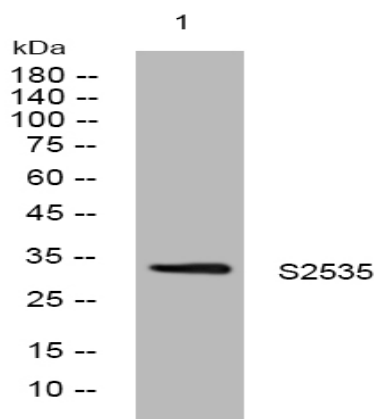


S2535 rabbit pAb

Catalog No :	YT6813
Reactivity :	Human;Mouse
Applications :	WB
Target :	S2535
Gene Name :	SLC25A35
Protein Name :	S2535
Human Gene Id :	399512
Human Swiss Prot No :	Q3KQZ1
Mouse Gene Id :	71998
Mouse Swiss Prot No :	Q5SWT3
Immunogen :	Synthesized peptide derived from human S2535 AA range: 154-204
Specificity :	This antibody detects endogenous levels of S2535 at Human/Mouse
Formulation :	Liquid in PBS containing 50% glycerol, 0.5% BSA and 0.02% sodium azide.
Source :	Polyclonal, Rabbit,IgG
Dilution :	WB 1:500-2000
Purification :	The antibody was affinity-purified from rabbit antiserum by affinity-chromatography using epitope-specific immunogen.
Concentration :	1 mg/ml
Storage Stability :	-15°C to -25°C/1 year(Do not lower than -25°C)

Molecularweight :	33kD
Background :	SLC25A35 belongs to the SLC25 family of mitochondrial carrier proteins (Haitina et al., 2006 [PubMed 16949250]).[supplied by OMIM, Mar 2008],
Function :	similarity:Belongs to the mitochondrial carrier family.,similarity:Contains 3 Solcar repeats.,
Subcellular Location :	Mitochondrion inner membrane ; Multi-pass membrane protein .
Sort :	14718
No4 :	1
Host :	Rabbit
Modifications :	Unmodified

Products Images



Western blot analysis of lysates from SW480 cells, primary antibody was diluted at 1:1000, 4° over night