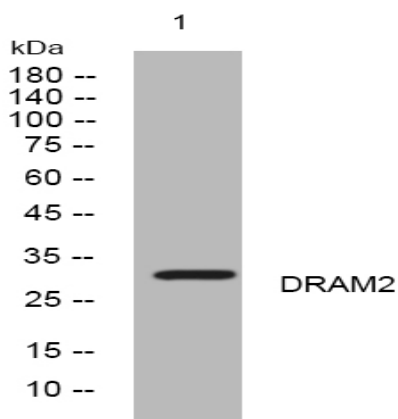


## DRAM2 rabbit pAb

<b>Catalog No :</b>	YT6810
<b>Reactivity :</b>	Human;Mouse;Rat
<b>Applications :</b>	WB
<b>Target :</b>	DRAM2
<b>Gene Name :</b>	DRAM2 TMEM77 PSEC0031 UNQ154/PRO180
<b>Protein Name :</b>	DRAM2
<b>Human Gene Id :</b>	128338
<b>Human Swiss Prot No :</b>	Q6UX65
<b>Mouse Gene Id :</b>	67171
<b>Mouse Swiss Prot No :</b>	Q9CR48
<b>Rat Gene Id :</b>	362011
<b>Rat Swiss Prot No :</b>	Q5BK09
<b>Immunogen :</b>	Synthesized peptide derived from human DRAM2 AA range: 57-107
<b>Specificity :</b>	This antibody detects endogenous levels of DRAM2 at Human/Mouse/Rat
<b>Formulation :</b>	Liquid in PBS containing 50% glycerol, 0.5% BSA and 0.02% sodium azide.
<b>Source :</b>	Polyclonal, Rabbit,IgG
<b>Dilution :</b>	WB 1:500-2000
<b>Purification :</b>	The antibody was affinity-purified from rabbit antiserum by affinity-chromatography using epitope-specific immunogen.

<b>Concentration :</b>	1 mg/ml
<b>Storage Stability :</b>	-15°C to -25°C/1 year(Do not lower than -25°C)
<b>Molecularweight :</b>	29kD
<b>Subcellular Location :</b>	Lysosome membrane ; Multi-pass membrane protein . Photoreceptor inner segment . Apical cell membrane . Localized to photoreceptor inner segments and to the apical surface of retinal pigment epithelial cells. .
<b>Expression :</b>	Expression is down-regulated in ovarian tumors (at protein level). Widely expressed with highest levels in placenta and heart. Expressed in the retina. Not detected in brain or thymus.
<b>Sort :</b>	5259
<b>No4 :</b>	1
<b>Host :</b>	Rabbit
<b>Modifications :</b>	Unmodified

## Products Images



Western blot analysis of lysates from THP-1 cells, primary antibody was diluted at 1:1000, 4° over night