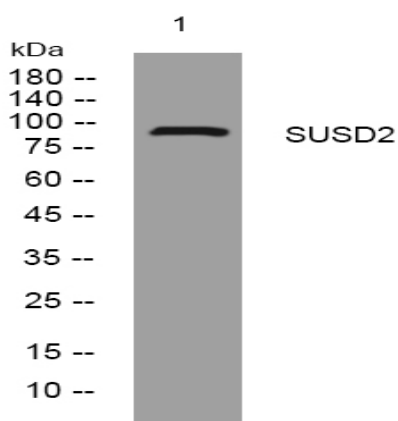


SUSD2 rabbit pAb

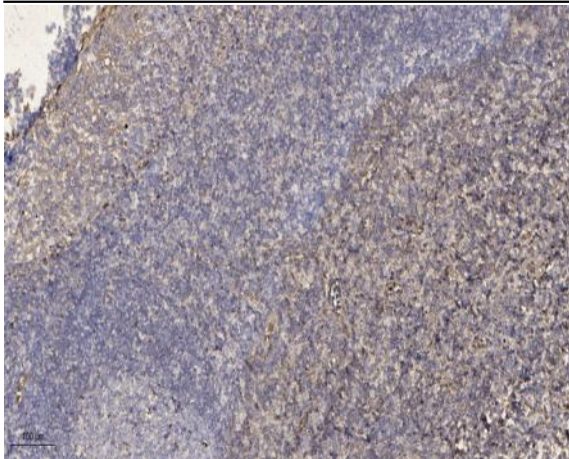
| | |
|------------------------------|-----------------------------------------------------------------------------------------------------------------------|
| Catalog No : | YT6809 |
| Reactivity : | Human;Mouse |
| Applications : | WB;IHC |
| Target : | SUSD2 |
| Gene Name : | SUSD2 |
| Protein Name : | SUSD2 |
| Human Gene Id : | 56241 |
| Human Swiss Prot No : | Q9UGT4 |
| Mouse Gene Id : | 71733 |
| Mouse Swiss Prot No : | Q9DBX3 |
| Immunogen : | Synthesized peptide derived from human SUSD2 AA range: 666-716 |
| Specificity : | This antibody detects endogenous levels of SUSD2 at Human/Mouse |
| Formulation : | Liquid in PBS containing 50% glycerol, 0.5% BSA and 0.02% sodium azide. |
| Source : | Polyclonal, Rabbit,IgG |
| Dilution : | WB 1:500-2000;IHC 1:50-300 |
| Purification : | The antibody was affinity-purified from rabbit antiserum by affinity-chromatography using epitope-specific immunogen. |
| Concentration : | 1 mg/ml |
| Storage Stability : | -15°C to -25°C/1 year(Do not lower than -25°C) |

Molecularweight : 90kD**Function :** similarity:Contains 1 AMOP domain.,similarity:Contains 1 SMB (somatomedin-B) domain.,similarity:Contains 1 Sushi (CCP/SCR) domain.,similarity:Contains 1 VWFD domain.,**Subcellular Location :** Cell membrane ; Single-pass type I membrane protein . SUS D2 and LGALS1 co-localized in very specific, punctate regions along the cell membrane of breast cancer cells. .**Expression :** Highly expressed in breast cancer, but shows a restricted expression pattern in normal tissues such as adipose, adrenal gland, kidney, lung, mammary gland, placenta, thyroid, trachea, and uterus (PubMed:23131994). Also expressed in colon; down-regulated in colon cancer tissues (PubMed:25351403).**Sort :** 16775**No4 :** 1**Host :** Rabbit**Modifications :** Unmodified

Products Images



Western blot analysis of lysates from SH-SY5Y cells, primary antibody was diluted at 1:1000, 4° over night



Immunohistochemical analysis of paraffin-embedded human tonsil. 1, Antibody was diluted at 1:200(4 ° overnight). 2, Tris-EDTA,pH9.0 was used for antigen retrieval. 3,Secondary antibody was diluted at 1:200(room temperature, 45min).