

CRNL1 rabbit pAb

Catalog No :	YT6805
Reactivity :	Human;Mouse;Rat
Applications :	WB
Target :	CRNL1
Fields :	>>Spliceosome
Gene Name :	CRNKL1 CRN CGI-201 MSTP021
Protein Name :	CRNL1
Human Gene Id :	51340
Human Swiss Prot No :	Q9BZJ0
Mouse Gene Id :	66877
Mouse Swiss Prot No :	P63154
Rat Gene Id :	100910202
Rat Swiss Prot No :	P63155
Immunogen :	Synthesized peptide derived from human CRNL1 AA range: 710-760
Specificity :	This antibody detects endogenous levels of CRNL1 at Human/Mouse/Rat
Formulation :	Liquid in PBS containing 50% glycerol, 0.5% BSA and 0.02% sodium azide.
Source :	Polyclonal, Rabbit,IgG
Dilution :	WB 1[?]500-2000
Purification :	The antibody was affinity-purified from rabbit antiserum by affinity-

chromatography using epitope-specific immunogen.

Concentration : 1 mg/ml

Storage Stability : -15°C to -25°C/1 year(Do not lower than -25°C)

Molecularweight : 93kD

Background : The crooked neck (crn) gene of Drosophila is essential for embryogenesis and is thought to be involved in cell cycle progression and pre-mRNA splicing. A protein encoded by this human locus has been found to localize to pre-mRNA splicing complexes in the nucleus and is necessary for pre-mRNA splicing. Alternatively spliced transcript variants have been described. [provided by RefSeq, Jul 2013],

Function : function:Involved in pre-mRNA splicing process.,similarity:Belongs to the crooked-neck family.,similarity:Contains 17 HAT repeats.,subcellular location:Colocalizes with core spliceosomal snRNP proteins. Also diffusely expressed in cytoplasm.,subunit:Identified in the spliceosome C complex, at least composed of AQR, C19orf29, CDC40, CDC5L, CRNKL1, DDX23, DDX41, DDX48, DDX5, DGCR14, DHX35, DHX38, DHX8, EFTUD2, FRG1, GPATC1, HNRPA1, HNRPA2B1, HNRPA3, HNRPC, HNRPF, HNRPH1, HNRPK, HNRPM, HNRPR, HNRPU, KIAA1160, KIAA1604, LSM2, LSM3, MAGOH, MORG1, PABPC1, PLRG1, PNN, PPIE, PPIL1, PPIL3, PPWD1, PRPF19, PRPF4B, PRPF6, PRPF8, RALY, RBM22, RBM8A, RBMX, SART1, SF3A1, SF3A2, SF3A3, SF3B1, SF3B2, SF3B3, SFRS1, SKIV2L2, SNRNP200, SNRNP40, SNRPA1, SNRPB, SNRPB2, SNRPD1, SNRPD2, SNRPD3, SNRPE, SNRPF, SNRPG, SNW1, SRRM1, SRRM2, SYF2, SYNCRIP, TFIP11, THOC4, U2AF1, XAB2 and ZCCHC8. Present in a spliceosom

Subcellular Location : Nucleus . Nucleus speckle . Colocalizes with core spliceosomal snRNP proteins (PubMed:12084575). .

Expression : Widely expressed (PubMed:11342225). Highly expressed in testis (PubMed:12084575). Not detected in brain and lung (PubMed:12084575).

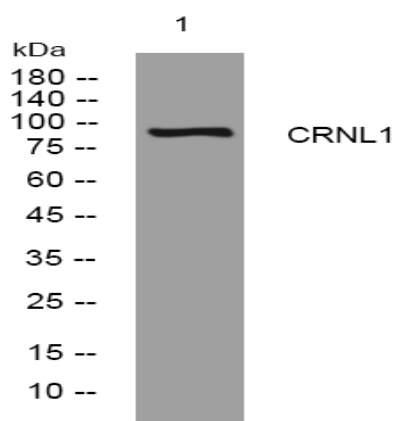
Sort : 4588

No4 : 1

Host : Rabbit

Modifications : Unmodified

Products Images



Western blot analysis of lysates from A549 cells, primary antibody was diluted at 1:1000, 4° over night