

## NPC2 rabbit pAb

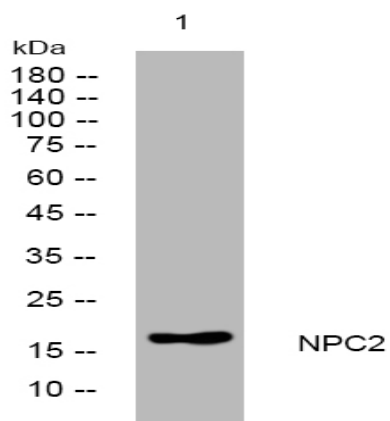
<b>Catalog No :</b>	YT6803
<b>Reactivity :</b>	Human;Mouse
<b>Applications :</b>	WB
<b>Target :</b>	NPC2
<b>Fields :</b>	>>Lysosome;>>Cholesterol metabolism
<b>Gene Name :</b>	NPC2 HE1
<b>Protein Name :</b>	NPC2
<b>Human Gene Id :</b>	10577
<b>Human Swiss Prot No :</b>	P61916
<b>Mouse Gene Id :</b>	67963
<b>Mouse Swiss Prot No :</b>	Q9Z0J0
<b>Immunogen :</b>	Synthesized peptide derived from human NPC2 AA range: 9-59
<b>Specificity :</b>	This antibody detects endogenous levels of NPC2 at Human/Mouse
<b>Formulation :</b>	Liquid in PBS containing 50% glycerol, 0.5% BSA and 0.02% sodium azide.
<b>Source :</b>	Polyclonal, Rabbit,IgG
<b>Dilution :</b>	WB 1[?]500-2000
<b>Purification :</b>	The antibody was affinity-purified from rabbit antiserum by affinity-chromatography using epitope-specific immunogen.
<b>Concentration :</b>	1 mg/ml

---

<b>Storage Stability :</b>	-15°C to -25°C/1 year(Do not lower than -25°C)
<b>Molecularweight :</b>	17kD
<b>Background :</b>	This gene encodes a protein containing a lipid recognition domain. The encoded protein may function in regulating the transport of cholesterol through the late endosomal/lysosomal system. Mutations in this gene have been associated with Niemann-Pick disease, type C2 and frontal lobe atrophy. [provided by RefSeq, Jul 2008],
<b>Function :</b>	disease:Defects in NPC2 are the cause of Niemann-Pick disease type C2 (NPC2) [MIM:607625]. NPC2 is a fatal autosomal recessive hereditary disease characterized by the accumulation of low-density lipoprotein-derived cholesterol in lysosomes.,function:May be involved in the regulation of the lipid composition of sperm membranes during the maturation in the epididymis.,similarity:Belongs to the NPC2 family.,tissue specificity:Epididymis.,
<b>Subcellular Location :</b>	Secreted . Endoplasmic reticulum . Lysosome . Interaction with cell-surface M6PR mediates endocytosis and targeting to lysosomes. .
<b>Expression :</b>	Detected in gallbladder bile (PubMed:21315718). Detected in fibroblasts, kidney, liver, spleen, small intestine, placenta and testis (at protein level) (PubMed:11125141). Epididymis.
<b>Sort :</b>	10942
<b>No4 :</b>	1
<b>Host :</b>	Rabbit
<b>Modifications :</b>	Unmodified

---

## Products Images



Western blot analysis of lysates from U2OS cells, primary antibody was diluted at 1:1000, 4° over night