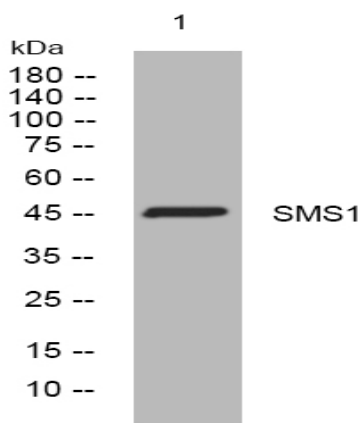


SMS1 rabbit pAb

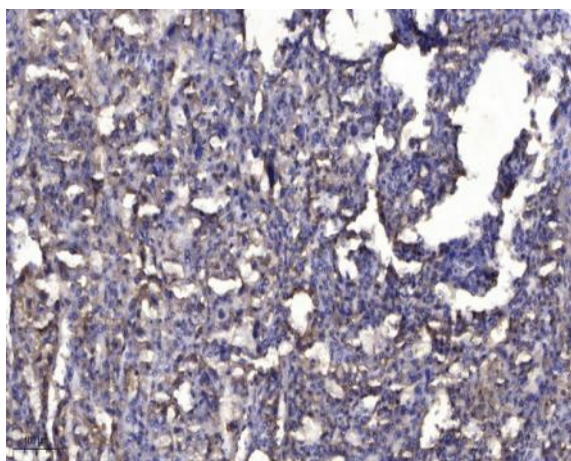
Catalog No :	YT6800
Reactivity :	Human;Mouse;Rat
Applications :	WB;ELISA;IHC
Target :	SMS1
Fields :	>>Sphingolipid metabolism;>>Metabolic pathways;>>Sphingolipid signaling pathway
Gene Name :	SGMS1 MOB SMS1 TMEM23
Protein Name :	SMS1
Human Gene Id :	259230
Human Swiss Prot No :	Q86VZ5
Mouse Gene Id :	208449
Mouse Swiss Prot No :	Q8VCQ6
Rat Gene Id :	353229
Rat Swiss Prot No :	Q7TSX5
Immunogen :	Synthesized peptide derived from human SMS1 AA range: 156-206
Specificity :	This antibody detects endogenous levels of SMS1 at Human/Mouse/Rat
Formulation :	Liquid in PBS containing 50% glycerol, 0.5% BSA and 0.02% sodium azide.
Source :	Polyclonal, Rabbit,IgG
Dilution :	WB 1:500-2000;IHC 1:50-300; ELISA 2000-20000

Purification :	The antibody was affinity-purified from rabbit antiserum by affinity-chromatography using epitope-specific immunogen.
Concentration :	1 mg/ml
Storage Stability :	-15°C to -25°C/1 year(Do not lower than -25°C)
Molecularweight :	46kD
Background :	The protein encoded by this gene is predicted to be a five-pass transmembrane protein. This gene may be predominately expressed in brain. [provided by RefSeq, Jul 2008],
Function :	<p>catalytic activity:A ceramide + a phosphatidylcholine = a sphingomyelin + a 1,2-diacyl-sn-glycerol.,enzyme regulation:Inhibited by bacterial PC-phospholipase C inhibitor D609.,function:Bidirectional lipid cholinephosphotransferase capable of converting phosphatidylcholine (PC) and ceramide to sphingomyelin (SM) and diacylglycerol (DAG) and vice versa. Direction is dependent on the relative concentrations of DAG and ceramide as phosphocholine acceptors. Directly and specifically recognizes the choline head group on the substrate. Also requires two fatty chains on the choline-P donor molecule in order to be recognized efficiently as a substrate. Does not function strictly as a SM synthase. Suppresses BAX-mediated apoptosis and also prevents cell death in response to stimuli such as hydrogen peroxide, osmotic stress, elevated temperature and exogenously supplied sphingolipids. May protect a</p>
Subcellular Location :	Golgi apparatus membrane ; Multi-pass membrane protein .
Expression :	Brain, heart, kidney, liver, muscle and stomach.
Sort :	16453
No4 :	1
Host :	Rabbit
Modifications :	Unmodified

Products Images



Western blot analysis of lysates from KB cells, primary antibody was diluted at 1:1000, 4° over night



Immunohistochemical analysis of paraffin-embedded human liver cancer. 1, Antibody was diluted at 1:200(4° overnight). 2, Tris-EDTA,pH9.0 was used for antigen retrieval. 3,Secondary antibody was diluted at 1:200(room temperature, 45min).