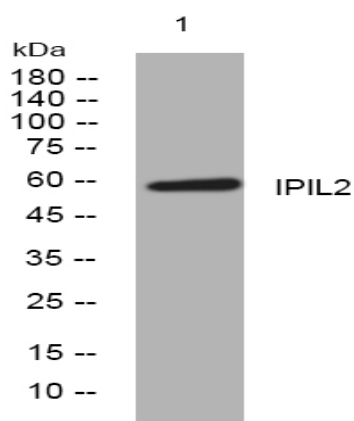


IPIL2 rabbit pAb

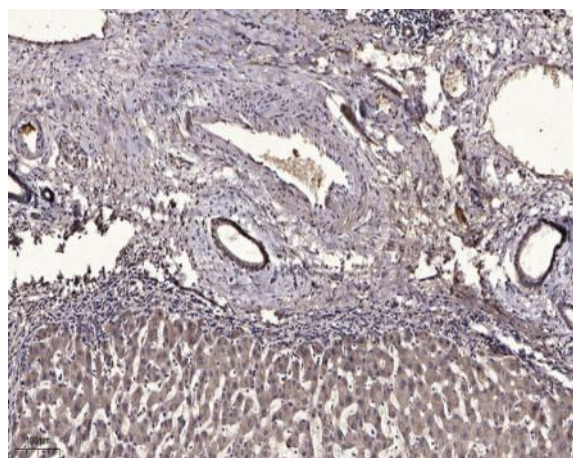
Catalog No :	YT6799
Reactivity :	Human;Mouse
Applications :	WB;IHC
Target :	IPIL2
Gene Name :	ITPRIPL2
Protein Name :	IPIL2
Human Gene Id :	162073
Human Swiss Prot No :	Q3MIP1
Mouse Gene Id :	319622
Mouse Swiss Prot No :	Q3UV16
Immunogen :	Synthesized peptide derived from human IPIL2 AA range: 484-534
Specificity :	This antibody detects endogenous levels of IPIL2 at Human/Mouse
Formulation :	Liquid in PBS containing 50% glycerol, 0.5% BSA and 0.02% sodium azide.
Source :	Polyclonal, Rabbit,IgG
Dilution :	WB 1:500-2000;IHC 1:50-300
Purification :	The antibody was affinity-purified from rabbit antiserum by affinity-chromatography using epitope-specific immunogen.
Concentration :	1 mg/ml
Storage Stability :	-15°C to -25°C/1 year(Do not lower than -25°C)

Molecularweight :	59kD
Function :	similarity:Belongs to the ITPRIP family.,
Subcellular Location :	Membrane; Single-pass type I membrane protein.
Sort :	8642
No4 :	1
Host :	Rabbit
Modifications :	Unmodified

Products Images



Western blot analysis of lysates from MCF-7 cells, primary antibody was diluted at 1:1000, 4° over night



Immunohistochemical analysis of paraffin-embedded human liver cancer. 1, Antibody was diluted at 1:200(4° overnight). 2, Tris-EDTA,pH9.0 was used for antigen retrieval. 3,Secondary antibody was diluted at 1:200(room temperature, 45min).