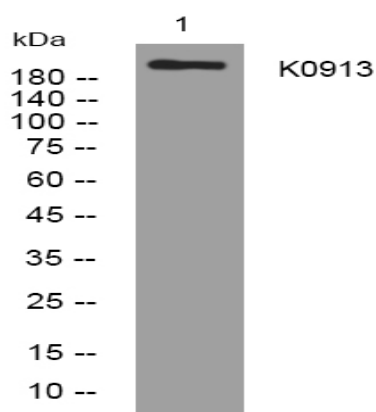


**K0913 rabbit pAb**

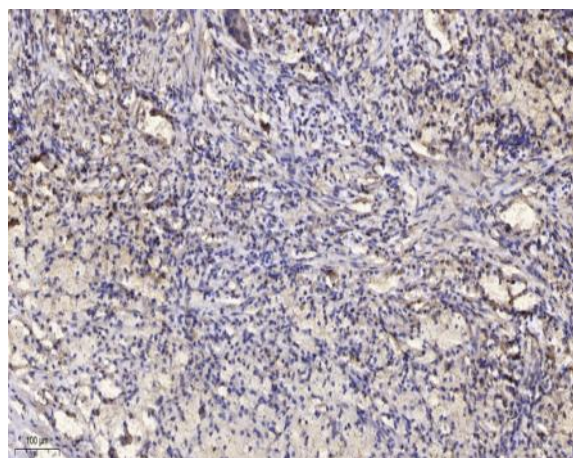
<b>Catalog No :</b>	YT6796
<b>Reactivity :</b>	Human;Mouse
<b>Applications :</b>	WB;ELISA;IHC
<b>Target :</b>	K0913
<b>Gene Name :</b>	KIAA0913
<b>Protein Name :</b>	K0913
<b>Human Gene Id :</b>	23053
<b>Human Swiss Prot No :</b>	A7E2V4
<b>Mouse Gene Id :</b>	268721
<b>Mouse Swiss Prot No :</b>	Q3UHH1
<b>Immunogen :</b>	Synthesized peptide derived from human K0913 AA range: 365-415
<b>Specificity :</b>	This antibody detects endogenous levels of K0913 at Human/Mouse
<b>Formulation :</b>	Liquid in PBS containing 50% glycerol, 0.5% BSA and 0.02% sodium azide.
<b>Source :</b>	Polyclonal, Rabbit,IgG
<b>Dilution :</b>	WB 1:500-2000;IHC 1:50-300; ELISA 2000-20000
<b>Purification :</b>	The antibody was affinity-purified from rabbit antiserum by affinity-chromatography using epitope-specific immunogen.
<b>Concentration :</b>	1 mg/ml
<b>Storage Stability :</b>	-15°C to -25°C/1 year(Do not lower than -25°C)

**Molecularweight :** 202kD**Function :** similarity:Contains 1 SWIM-type zinc finger.,**Subcellular Location :** Cytoplasm, cytosol .**Sort :** 8821**No4 :** 1**Host :** Rabbit**Modifications :** Unmodified

## Products Images



Western blot analysis of lysates from 293T cells, primary antibody was diluted at 1:1000, 4° over night



Immunohistochemical analysis of paraffin-embedded human Squamous cell carcinoma of lung. 1, Antibody was diluted at 1:200(4° overnight). 2, Tris-EDTA,pH9.0 was used for antigen retrieval. 3,Secondary antibody was diluted at 1:200(room temperature, 45min).