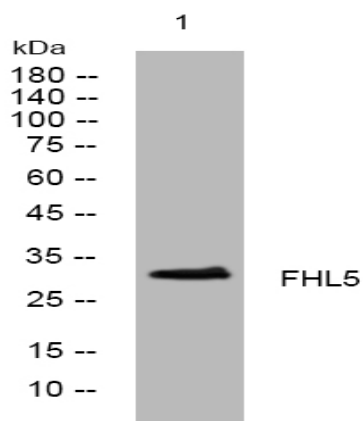


FHL5 rabbit pAb

Catalog No :	YT6794
Reactivity :	Human;Mouse;Rat
Applications :	WB
Target :	FHL5
Gene Name :	FHL5 ACT
Protein Name :	FHL5
Human Gene Id :	9457
Human Swiss Prot No :	Q5TD97
Mouse Gene Id :	57756
Mouse Swiss Prot No :	Q9WTX7
Rat Gene Id :	297954
Rat Swiss Prot No :	Q6AXT1
Immunogen :	Synthesized peptide derived from human FHL5 AA range: 129-179
Specificity :	This antibody detects endogenous levels of FHL5 at Human/Mouse/Rat
Formulation :	Liquid in PBS containing 50% glycerol, 0.5% BSA and 0.02% sodium azide.
Source :	Polyclonal, Rabbit,IgG
Dilution :	WB 1:500-2000
Purification :	The antibody was affinity-purified from rabbit antiserum by affinity-chromatography using epitope-specific immunogen.

Concentration :	1 mg/ml
Storage Stability :	-15°C to -25°C/1 year(Do not lower than -25°C)
Molecularweight :	31kD
Background :	<p>The protein encoded by this gene is coordinately expressed with activator of cAMP-responsive element modulator (CREM). It is associated with CREM and confers a powerful transcriptional activation function. CREM acts as a transcription factor essential for the differentiation of spermatids into mature spermatozoa. There are multiple polyadenylation sites found in this gene. Polymorphisms in this gene may be associated with susceptibility for migraine headaches. Alternative splicing results in multiple transcript variants encoding the same protein. [provided by RefSeq, Apr 2016],</p>
Function :	<p>function:May be involved in the regulation of spermatogenesis. Stimulates CREM transcriptional activity in a phosphorylation-independent manner.,similarity:Contains 4 LIM zinc-binding domains.,subcellular location:Nuclei of round and elongated spermatids.,subunit:Interacts with CREM via the third LIM domain.,tissue specificity:Testis-specific (at protein level),</p>
Subcellular Location :	Nucleus . Nuclei of round and elongated spermatids.
Expression :	Testis-specific (at protein level).
Sort :	6045
No4 :	1
Host :	Rabbit
Modifications :	Unmodified

Products Images



Western blot analysis of lysates from HEK293 cells, primary antibody was diluted at 1:1000, 4° over night