

PLD6 rabbit pAb

Catalog No :	YT6790
Reactivity :	Human;Mouse
Applications :	WB;IHC
Target :	PLD6
Gene Name :	PLD6
Protein Name :	PLD6
Human Gene Id :	201164
Human Swiss Prot No :	Q8N2A8
Mouse Gene Id :	194908
Mouse Swiss Prot No :	Q5SWZ9
Immunogen :	Synthesized peptide derived from human PLD6 AA range: 29-79
Specificity :	This antibody detects endogenous levels of PLD6 at Human/Mouse
Formulation :	Liquid in PBS containing 50% glycerol, 0.5% BSA and 0.02% sodium azide.
Source :	Polyclonal, Rabbit,IgG
Dilution :	WB 1:500-2000;IHC 1:50-300
Purification :	The antibody was affinity-purified from rabbit antiserum by affinity-chromatography using epitope-specific immunogen.
Concentration :	1 mg/ml
Storage Stability :	-15°C to -25°C/1 year(Do not lower than -25°C)

Molecularweight : 28kD

Function : catalytic activity:A phosphatidylcholine + H(2)O = choline + a phosphatidate.,similarity:Belongs to the phospholipase D family.,similarity:Contains 1 PLD phosphodiesterase domain.,

Subcellular Location : Mitochondrion outer membrane ; Single-pass membrane protein . Golgi apparatus . Localization in the mitochondrial outer membrane is found in different cell types where phospholipase is the predominant activity, however, in pachytene spermatocytes and spermatids of mouse testes where nuclease activity is predominant, localization is restricted to the Golgi, suggesting this enzyme is localized in different subcellular compartments depending on the role (phospholipase or nuclease) it needs to play in each cell type and developmental stage. .

Expression : Predominantly expressed in testis and ovary, but not limited to gonads (at protein level) (PubMed:17028579, PubMed:21397847). It is also found in brain, heart, pituitary gland, prostate, pancreas, thyroid, bone marrow, lung and muscle (PubMed:21397847).

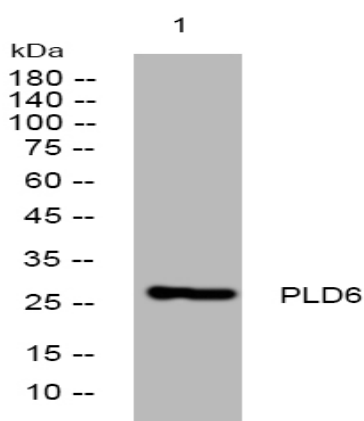
Sort : 12836

No4 : 1

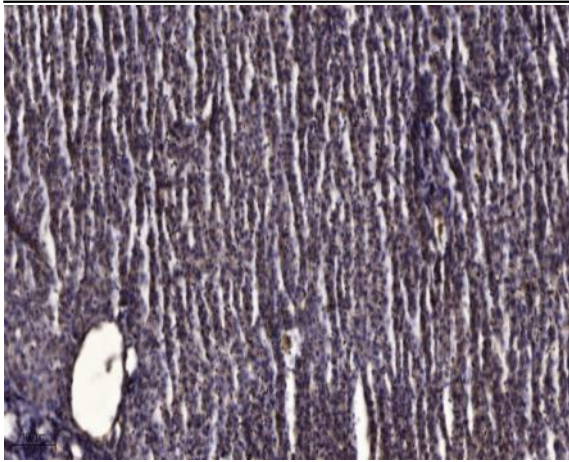
Host : Rabbit

Modifications : Unmodified

Products Images



Western blot analysis of lysates from A549 cells, primary antibody was diluted at 1:1000, 4° over night



Immunohistochemical analysis of paraffin-embedded human liver cancer. 1, Antibody was diluted at 1:200(4° overnight). 2, Tris-EDTA,pH9.0 was used for antigen retrieval. 3,Secondary antibody was diluted at 1:200(room temperature, 45min).