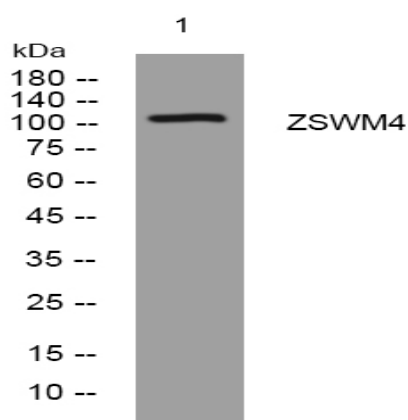


ZSWM4 rabbit pAb

Catalog No :	YT6788
Reactivity :	Human;Mouse
Applications :	WB
Target :	ZSWM4
Gene Name :	ZSWIM4
Protein Name :	ZSWM4
Human Gene Id :	65249
Human Swiss Prot No :	Q9H7M6
Mouse Gene Id :	212168
Mouse Swiss Prot No :	Q8C7B8
Immunogen :	Synthesized peptide derived from human ZSWM4 AA range: 94-144
Specificity :	This antibody detects endogenous levels of ZSWM4 at Human/Mouse
Formulation :	Liquid in PBS containing 50% glycerol, 0.5% BSA and 0.02% sodium azide.
Source :	Polyclonal, Rabbit,IgG
Dilution :	WB 1:500-2000
Purification :	The antibody was affinity-purified from rabbit antiserum by affinity-chromatography using epitope-specific immunogen.
Concentration :	1 mg/ml
Storage Stability :	-15°C to -25°C/1 year(Do not lower than -25°C)

Molecularweight : 109kD**Function :** similarity:Contains 1 SWIM-type zinc finger.,**Sort :** 24796**No4 :** 1**Host :** Rabbit**Modifications :** Unmodified

Products Images



Western blot analysis of lysates from MCF-7 cells, primary antibody was diluted at 1:1000, 4° over night