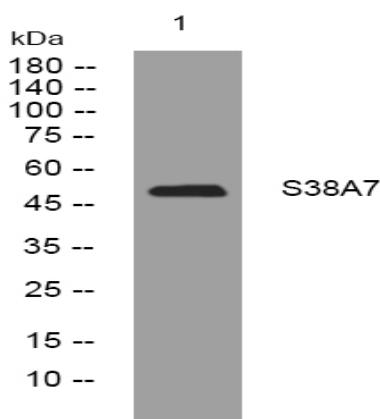


S38A7 rabbit pAb

| | |
|------------------------------|---|
| Catalog No : | YT6787 |
| Reactivity : | Human;Mouse;Rat |
| Applications : | WB |
| Target : | S38A7 |
| Gene Name : | SLC38A7 SNAT7 |
| Protein Name : | S38A7 |
| Human Gene Id : | 55238 |
| Human Swiss Prot No : | Q9NVC3 |
| Mouse Gene Id : | 234595 |
| Mouse Swiss Prot No : | Q8BWH0 |
| Rat Gene Id : | 291840 |
| Rat Swiss Prot No : | Q6JWR2 |
| Immunogen : | Synthesized peptide derived from human S38A7 AA range: 209-259 |
| Specificity : | This antibody detects endogenous levels of S38A7 at Human/Mouse/Rat |
| Formulation : | Liquid in PBS containing 50% glycerol, 0.5% BSA and 0.02% sodium azide. |
| Source : | Polyclonal, Rabbit,IgG |
| Dilution : | WB 1:500-2000 |
| Purification : | The antibody was affinity-purified from rabbit antiserum by affinity-chromatography using epitope-specific immunogen. |

| | |
|-------------------------------|--|
| Concentration : | 1 mg/ml |
| Storage Stability : | -15°C to -25°C/1 year(Do not lower than -25°C) |
| Molecularweight : | 51kD |
| Function : | function:Putative sodium-dependent amino acid/proton antiporter.,similarity:Belongs to the amino acid/polyamine transporter 2 family., |
| Subcellular Location : | Membrane ; Multi-pass membrane protein . In neurons, located in soma and axons. . |
| Sort : | 14735 |
| No4 : | 1 |
| Host : | Rabbit |
| Modifications : | Unmodified |

Products Images



Western blot analysis of lysates from CACO2 cells, primary antibody was diluted at 1:1000, 4° over night