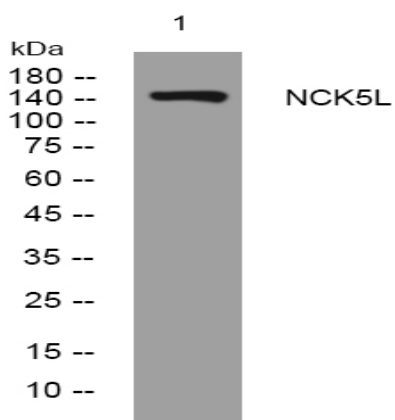


NCK5L rabbit pAb

Catalog No :	YT6781
Reactivity :	Human;Mouse
Applications :	WB
Target :	NCK5L
Gene Name :	NCKAP5L KIAA1602 FP1193
Protein Name :	NCK5L
Human Gene Id :	57701
Human Swiss Prot No :	Q9HCH0
Mouse Gene Id :	380969
Mouse Swiss Prot No :	Q6GQX2
Immunogen :	Synthesized peptide derived from human NCK5L AA range: 261-311
Specificity :	This antibody detects endogenous levels of NCK5L at Human/Mouse
Formulation :	Liquid in PBS containing 50% glycerol, 0.5% BSA and 0.02% sodium azide.
Source :	Polyclonal, Rabbit,IgG
Dilution :	WB 1:500-2000
Purification :	The antibody was affinity-purified from rabbit antiserum by affinity-chromatography using epitope-specific immunogen.
Concentration :	1 mg/ml
Storage Stability :	-15°C to -25°C/1 year(Do not lower than -25°C)

Molecularweight : 146kD**Subcellular Location :** Cytoplasm, cytoskeleton, microtubule organizing center, centrosome . Localizes to microtubule plus ends (PubMed:26485573, PubMed:26482847). Associates with centrosomes during interphase, but dissociates from these structures from the onset of mitosis (PubMed:26549230) .**Sort :** 10608**No4 :** 1**Host :** Rabbit**Modifications :** Unmodified

Products Images



Western blot analysis of lysates from MCF-7 cells, primary antibody was diluted at 1:1000, 4° over night