

**PATE4 rabbit pAb**

|                              |   |
|------------------------------|---|
| <b>Catalog No :</b>          | YT6776  |
| <b>Reactivity :</b>          | Human;Mouse   |
| <b>Applications :</b>        | IHC;IF  |
| <b>Target :</b>              | PATE4   |
| <b>Fields :</b>              | >>Neuroactive ligand-receptor interaction   |
| <b>Gene Name :</b>           | PATE4   |
| <b>Protein Name :</b>        | PATE4   |
| <b>Human Gene Id :</b>       | 399968  |
| <b>Human Swiss Prot No :</b> | P0C8F1  |
| <b>Mouse Gene Id :</b>       | 56872   |
| <b>Mouse Swiss Prot No :</b> | Q09098  |
| <b>Immunogen :</b>           | Synthesized peptide derived from human PATE4 AA range: 30-80  |
| <b>Specificity :</b>         | This antibody detects endogenous levels of PATE4 at Human/Mouse   |
| <b>Formulation :</b>         | Liquid in PBS containing 50% glycerol, 0.5% BSA and 0.02% sodium azide.   |
| <b>Source :</b>              | Polyclonal, Rabbit,IgG  |
| <b>Dilution :</b>            | IHC 1[?]50-200. IF 1:50-200   |
| <b>Purification :</b>        | The antibody was affinity-purified from rabbit antiserum by affinity-chromatography using epitope-specific immunogen. |
| <b>Concentration :</b>       | 1 mg/ml   |

---

**Storage Stability :** -15°C to -25°C/1 year(Do not lower than -25°C)

---

**Molecularweight :** 11kD

---

**Function :** function:May modulate the function of nicotinic acetylcholine receptors. May enhance sperm motility.,similarity:Belongs to the PATE family.,similarity:Contains 1 UPAR/Ly6 domain.,tissue specificity:Specifically expressed in prostate, testis and spinal cord. Present in the acrosomal region of sperm cells. Present in apical epithelial cells of prostatic duct.,

---

**Subcellular Location :** Secreted . Cytoplasmic vesicle, secretory vesicle, acrosome .

---

**Expression :** Specifically expressed in prostate, testis and spinal cord. Present in the acrosomal region of sperm cells. Present in apical epithelial cells of prostatic duct.

---

**Sort :** 11644

---

**No4 :** 1

---

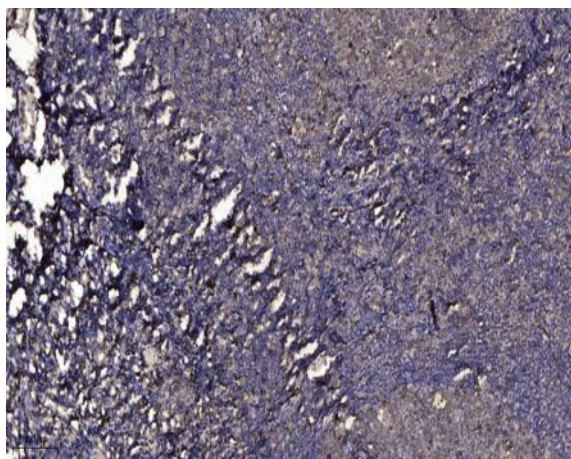
**Host :** Rabbit

---

**Modifications :** Unmodified

---

## Products Images



Immunohistochemical analysis of paraffin-embedded human tonsil. 1, Antibody was diluted at 1:200(4° overnight). 2, Tris-EDTA,pH9.0 was used for antigen retrieval. 3,Secondary antibody was diluted at 1:200(room temperature, 30min).