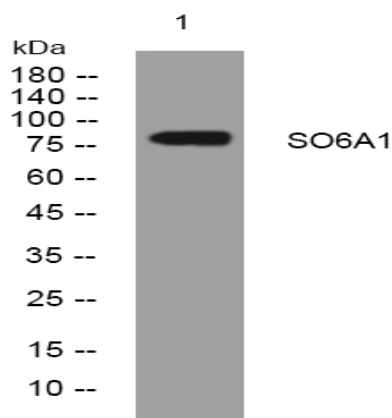


SO6A1 rabbit pAb

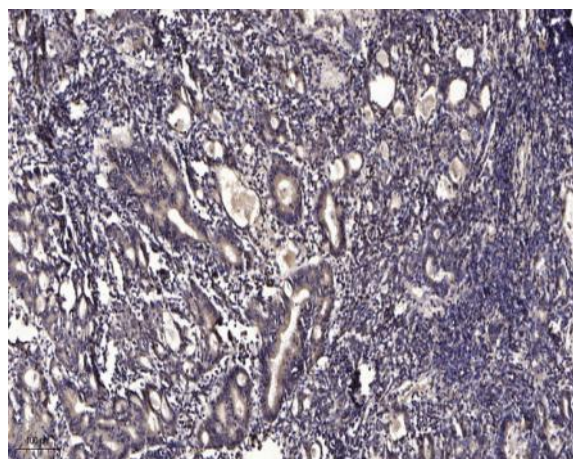
Catalog No :	YT6770
Reactivity :	Human
Applications :	WB;IHC
Target :	SO6A1
Gene Name :	SLCO6A1 OATP6A1 SLC21A19
Protein Name :	SO6A1
Human Gene Id :	133482
Human Swiss Prot No :	Q86UG4
Immunogen :	Synthesized peptide derived from human SO6A1 AA range: 213-263
Specificity :	This antibody detects endogenous levels of SO6A1 at Human
Formulation :	Liquid in PBS containing 50% glycerol, 0.5% BSA and 0.02% sodium azide.
Source :	Polyclonal, Rabbit,IgG
Dilution :	WB 1:500-2000;IHC 1:50-300
Purification :	The antibody was affinity-purified from rabbit antiserum by affinity-chromatography using epitope-specific immunogen.
Concentration :	1 mg/ml
Storage Stability :	-15 °C to -25 °C/1 year(Do not lower than -25 °C)
Molecularweight :	79kD
Function :	similarity:Belongs to the organo anion transporter (TC 2.A.60) family.,tissue specificity:Strongly expressed in testis. Weakly expressed in spleen, brain, fetal brain and placenta. Detected in lung tumors.,

Subcellular Location :	Cell membrane; Multi-pass membrane protein.
Expression :	Strongly expressed in testis. Weakly expressed in spleen, brain, fetal brain and placenta. Detected in lung tumors.
Sort :	16484
No4 :	1
Host :	Rabbit
Modifications :	Unmodified

Products Images



Western blot analysis of lysates from 293T cells, primary antibody was diluted at 1:1000, 4° over night



Immunohistochemical analysis of paraffin-embedded human Gastric adenocarcinoma. 1, Antibody was diluted at 1:200(4° overnight). 2, Tris-EDTA,pH9.0 was used for antigen retrieval. 3,Secondary antibody was diluted at 1:200(room temperature, 45min).