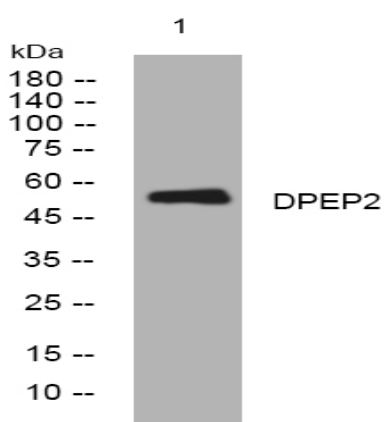


DPEP2 rabbit pAb

Catalog No :	YT6769
Reactivity :	Human;Mouse;Rat
Applications :	WB
Target :	DPEP2
Gene Name :	DPEP2 UNQ284/PRO323
Protein Name :	DPEP2
Human Gene Id :	64174
Human Swiss Prot No :	Q9H4A9
Mouse Gene Id :	319446
Mouse Swiss Prot No :	Q8C255
Rat Gene Id :	291984
Rat Swiss Prot No :	Q5M872
Immunogen :	Synthesized peptide derived from human DPEP2 AA range: 94-144
Specificity :	This antibody detects endogenous levels of DPEP2 at Human/Mouse/Rat
Formulation :	Liquid in PBS containing 50% glycerol, 0.5% BSA and 0.02% sodium azide.
Source :	Polyclonal, Rabbit,IgG
Dilution :	WB 1:500-2000
Purification :	The antibody was affinity-purified from rabbit antiserum by affinity-chromatography using epitope-specific immunogen.

Concentration :	1 mg/ml
Storage Stability :	-15°C to -25°C/1 year(Do not lower than -25°C)
Molecularweight :	53kD
Background :	DPEP2 belongs to the membrane-bound dipeptidase (EC 3.4.13.19) family. These enzymes hydrolyze a variety of dipeptides, including leukotriene D4, the beta-lactam ring of some antibiotics, and cystinyl-bis-glycine (cys-bis-gly) formed during glutathione degradation (Habib et al., 2003 [PubMed 12738806]).[supplied by OMIM, Mar 2008],
Function :	catalytic activity:Hydrolysis of dipeptides.,cofactor:Zinc.,enzyme regulation:Inhibited by L-penicillamine.,function:Probable metalloprotease which hydrolyzes leukotriene D4 (LTD4) into leukotriene E4 (LTE4).,similarity:Belongs to the peptidase M19 family.,subunit:Homodimer; disulfide-linked.,
Subcellular Location :	Membrane ; Lipid-anchor, GPI-anchor .
Sort :	5240
No4 :	1
Host :	Rabbit
Modifications :	Unmodified

Products Images



Western blot analysis of lysates from 3T3 cells, primary antibody was diluted at 1:1000, 4° over night