

FOXD1 rabbit pAb

Catalog No :	YT6766
Reactivity :	Human;Mouse;Rat
Applications :	WB
Target :	FOXD1
Gene Name :	FOXD1 FKHL8 FREAC4
Protein Name :	FOXD1
Human Gene Id :	2297
Human Swiss Prot No :	Q16676
Mouse Gene Id :	15229
Mouse Swiss Prot No :	Q61345
Rat Swiss Prot No :	Q63251
Immunogen :	Synthesized peptide derived from human FOXD1 AA range: 82-132
Specificity :	This antibody detects endogenous levels of FOXD1 at Human/Mouse/Rat
Formulation :	Liquid in PBS containing 50% glycerol, 0.5% BSA and 0.02% sodium azide.
Source :	Polyclonal, Rabbit,IgG
Dilution :	WB 1:500-2000
Purification :	The antibody was affinity-purified from rabbit antiserum by affinity-chromatography using epitope-specific immunogen.
Concentration :	1 mg/ml

Storage Stability : -15°C to -25°C/1 year(Do not lower than -25°C)

Molecularweight : 51kD

Background : This gene belongs to the forkhead family of transcription factors which are characterized by a distinct forkhead domain. Studies of the orthologous mouse protein indicate that it functions in kidney development by promoting nephron progenitor differentiation, and it also functions in the development of the retina and optic chiasm. It may also regulate inflammatory reactions and prevent autoimmunity. [provided by RefSeq, Apr 2014],

Function : function:Transcription factor required for formation of positional identity in the developing retina, regionalization of the optic chiasm and morphogenesis of the kidney. Can neutralize ectodermal cells directly.,similarity:Contains 1 fork-head DNA-binding domain.,

Subcellular Location : Nucleus.

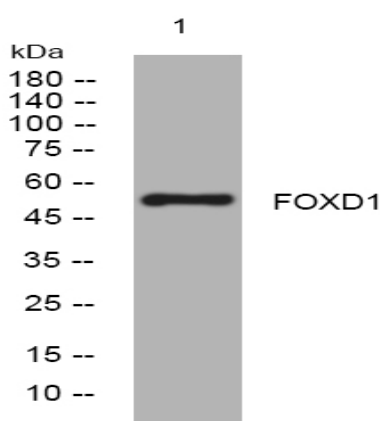
Sort : 6222

No4 : 1

Host : Rabbit

Modifications : Unmodified

Products Images



Western blot analysis of lysates from 293T cells, primary antibody was diluted at 1:1000, 4° over night