

## ITIH6 rabbit pAb

<b>Catalog No :</b>	YT6763
<b>Reactivity :</b>	Human
<b>Applications :</b>	WB;ELISA;IHC
<b>Target :</b>	ITIH6
<b>Gene Name :</b>	ITIH6 ITIH5L UNQ6369/PRO21074
<b>Protein Name :</b>	ITIH6
<b>Human Gene Id :</b>	347365
<b>Human Swiss Prot No :</b>	Q6UXX5
<b>Immunogen :</b>	Synthesized peptide derived from human ITIH6 AA range: 152-202
<b>Specificity :</b>	This antibody detects endogenous levels of ITIH6 at Human
<b>Formulation :</b>	Liquid in PBS containing 50% glycerol, 0.5% BSA and 0.02% sodium azide.
<b>Source :</b>	Polyclonal, Rabbit,IgG
<b>Dilution :</b>	WB 1:500-2000;IHC 1:50-300; ELISA 2000-20000
<b>Purification :</b>	The antibody was affinity-purified from rabbit antiserum by affinity-chromatography using epitope-specific immunogen.
<b>Concentration :</b>	1 mg/ml
<b>Storage Stability :</b>	-15°C to -25°C/1 year(Do not lower than -25°C)
<b>Molecularweight :</b>	144kD
<b>Background :</b>	The protein encoded by this gene belongs to the interalpha trypsin inhibitor heavy chain (ITIH) family. Interalpha trypsin inhibitor (ITI) is composed of two heavy chains (containing VWA domain) and one light chain. The light chain

confers the protease-inhibitor function, while the heavy chains are involved in mediating protein-protein interactions with the components of the extracellular matrix. [provided by RefSeq, Sep 2009],

**Function :** similarity:Belongs to the ITIH family.,similarity:Contains 1 VWFA domain.,

**Subcellular Location :** Secreted .

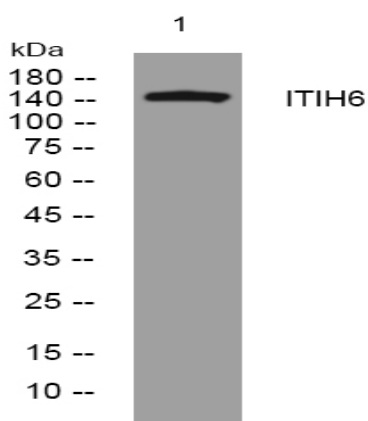
**Sort :** 8729

**No4 :** 1

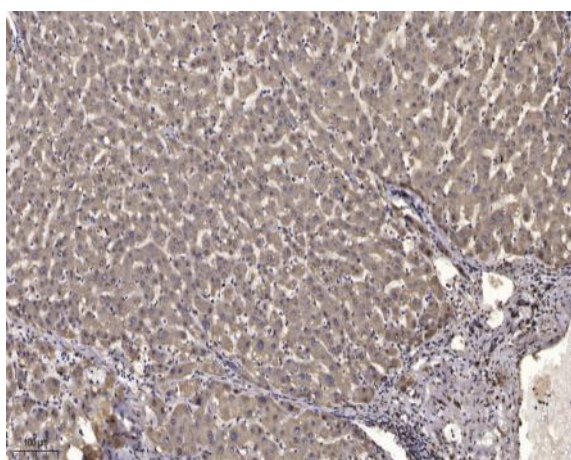
**Host :** Rabbit

**Modifications :** Unmodified

## Products Images



Western blot analysis of lysates from U2OS cells, primary antibody was diluted at 1:1000, 4° over night



Immunohistochemical analysis of paraffin-embedded human liver cancer. 1, Antibody was diluted at 1:200(4° overnight). 2, Tris-EDTA,pH9.0 was used for antigen retrieval. 3,Secondary antibody was diluted at 1:200(room temperature, 45min).