

KRA13 rabbit pAb

Catalog No :	YT6761
Reactivity :	Human
Applications :	WB;IHC
Target :	KRA13
Gene Name :	KRTAP1-3 B2B KAP1.2 KAP1.3 KAP1.8 KAP1.9 KRATP1.9 KRTAP1.8
Protein Name :	KRA13
Human Gene Id :	81850
Human Swiss Prot No :	Q8IUG1
Immunogen :	Synthesized peptide derived from human KRA13 AA range: 95-145
Specificity :	This antibody detects endogenous levels of KRA13 at Human
Formulation :	Liquid in PBS containing 50% glycerol, 0.5% BSA and 0.02% sodium azide.
Source :	Polyclonal, Rabbit,IgG
Dilution :	WB 1:500-2000;IHC 1:50-300
Purification :	The antibody was affinity-purified from rabbit antiserum by affinity-chromatography using epitope-specific immunogen.
Concentration :	1 mg/ml
Storage Stability :	-15°C to -25°C/1 year(Do not lower than -25°C)
Molecularweight :	19kD
Background :	This protein is a member of the keratin-associated protein (KAP) family. The KAP proteins form a matrix of keratin intermediate filaments which contribute to the structure of hair fibers. KAP family members appear to have unique, family-

specific amino- and carboxyl-terminal regions and are subdivided into three multi-gene families according to amino acid composition: the high sulfur, the ultrahigh sulfur, and the high tyrosine/glycine KAPs. This protein is a member of the high sulfur KAP family and the gene is localized to a cluster of KAPs at 17q12-q21. [provided by RefSeq, Jul 2008],

Function :

function:In the hair cortex, hair keratin intermediate filaments are embedded in an interfilamentous matrix, consisting of hair keratin-associated proteins (KRTAP), which are essential for the formation of a rigid and resistant hair shaft through their extensive disulfide bond cross-linking with abundant cysteine residues of hair keratins. The matrix proteins include the high-sulfur and high-glycine-tyrosine keratins.,similarity:Belongs to the KRTAP type 1 family.,subunit:Interacts with hair keratins.,tissue specificity:Expressed in the middle/upper portions of the hair cortex, in the region termed the keratogenous zone.,

Subcellular Location :

keratin filament,

Expression :

Expressed in the middle/upper portions of the hair cortex, in the region termed the keratogenous zone.

Sort :

8995

No4 :

1

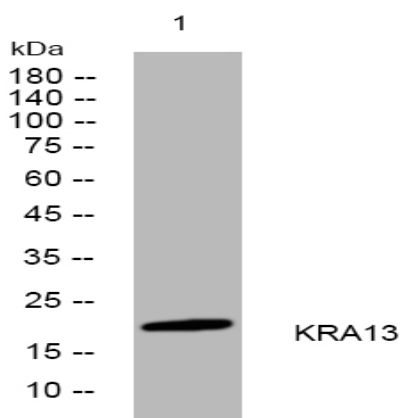
Host :

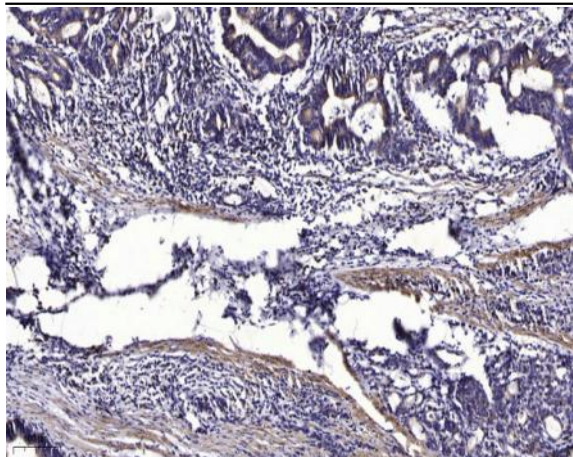
Rabbit

Modifications :

Unmodified

Products Images





Immunohistochemical analysis of paraffin-embedded human Gastric adenocarcinoma. 1, Antibody was diluted at 1:200(4° overnight). 2, Tris-EDTA,pH9.0 was used for antigen retrieval. 3,Secondary antibody was diluted at 1:200(room temperature, 45min).