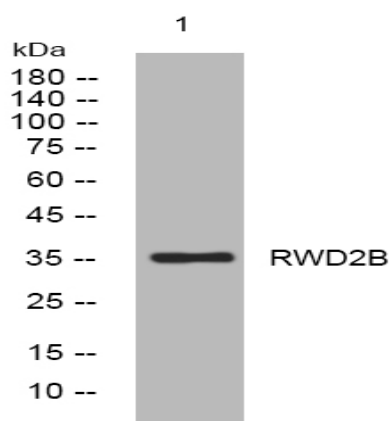


RWD2B rabbit pAb

Catalog No :	YT6760
Reactivity :	Human;Mouse
Applications :	WB
Target :	RWD2B
Gene Name :	RWDD2B C21orf6 GL011
Protein Name :	RWD2B
Human Gene Id :	10069
Human Swiss Prot No :	P57060
Mouse Gene Id :	53858
Mouse Swiss Prot No :	Q99M03
Immunogen :	Synthesized peptide derived from human RWD2B AA range: 228-278
Specificity :	This antibody detects endogenous levels of RWD2B at Human/Mouse
Formulation :	Liquid in PBS containing 50% glycerol, 0.5% BSA and 0.02% sodium azide.
Source :	Polyclonal, Rabbit,IgG
Dilution :	WB 1[?]500-2000
Purification :	The antibody was affinity-purified from rabbit antiserum by affinity-chromatography using epitope-specific immunogen.
Concentration :	1 mg/ml
Storage Stability :	-15°C to -25°C/1 year(Do not lower than -25°C)

Molecularweight :	35kD
Function :	similarity:Contains 1 RWD domain.,tissue specificity:Ubiquitous.,
Expression :	Ubiquitous.
Sort :	14662
No4 :	1
Host :	Rabbit
Modifications :	Unmodified

Products Images



Western blot analysis of lysates from 293T cells, primary antibody was diluted at 1:1000, 4° over night