

ZN487 rabbit pAb

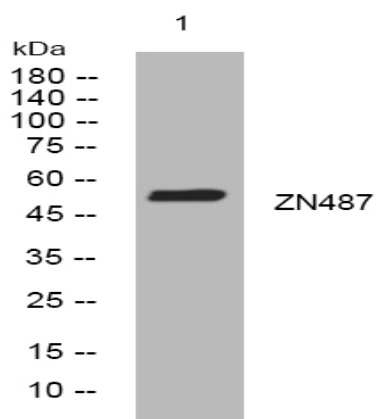
Catalog No :	YT6758
Reactivity :	Human
Applications :	WB
Target :	ZN487
Gene Name :	ZNF487P KRBO1 ZNF487
Protein Name :	ZN487
Human Swiss Prot No :	B1APH4
Immunogen :	Synthesized peptide derived from human ZN487 AA range: 61-111
Specificity :	This antibody detects endogenous levels of ZN487 at Human
Formulation :	Liquid in PBS containing 50% glycerol, 0.5% BSA and 0.02% sodium azide.
Source :	Polyclonal, Rabbit,IgG
Dilution :	WB 1:500-2000
Purification :	The antibody was affinity-purified from rabbit antiserum by affinity-chromatography using epitope-specific immunogen.
Concentration :	1 mg/ml
Storage Stability :	-15°C to -25°C/1 year(Do not lower than -25°C)
Molecularweight :	49kD
Subcellular Location :	Nucleus .
Sort :	24622

No4 : 1

Host : Rabbit

Modifications : Unmodified

Products Images



Western blot analysis of lysates from A431 cells, primary antibody was diluted at 1:1000, 4° over night